



DOCUMENTATION



arKaos

The information in this document is subject to change without notice and does not represent a commitment on the part of ArKaos S.A. No part of this publication may be copied, reproduced or otherwise transmitted or recorded, for any purpose, without prior written permission by ArKaos S.A.

All product and company names are ™ or © trademarks of their respective owners.

© ArKaos S.A. 2012.
All rights reserved.

Table of Contents

ArKaos Software License	1
GNU Lesser General Public License	5
Introduction	8
Welcome to MediaMaster Version 3!	8
Documentation	8
Express vs Pro	8
Installing the software - PC	9
Installing the software - Mac	9
About your license	10
Obtaining your serial number from the ArKaos web site	10
Preparing your Machine ID code.....	10
About the Demo Mode	10
Generating your final serial number	11
Introduction to the software	12
Control Concepts	12
Simple Mode interface	12
Fixture Mode interface	12
Features Summary:	13
Outputs.....	13
Visual Presets – Simple Mode interface	13
Media Management (Express and Pro)	13
Layers – Simple Mode	14
Software Interface Overview	15
Simple Mode interface	15
Key features	15
Fixture Mode interface – MediaMaster Pro	16
Key features	16
Full Screen Output	16
Connecting an External Controller	17
Setting up DMX Control	17
Using ArtNet.....	17
MSEX implementation (Pro edition only)	17
Support for grandMA MA-Net (Windows Only)	17
Using an Enttec DMX USB Pro device	18
Setting up an Enttec DMX USB Pro device on a PC.....	18
Setting up an Enttec DMX USB Pro device on a Mac OSX	19
Setting up MIDI Control	19
Using the Software – Simple Mode	20
The main window	20
Layer Output Previews	20
Master Output	21
Master output controls.....	21
Masks (Instant mode only)	22
Keystoning (Instant mode only).....	22

Soft Edging (Instant mode only).....	22
Status indicators	22
Visual Preset and Preset Patch	23
Patch Selection	24
Latch Toggle	24
Managing Patch and Visual presets (Copy, Paste, Edit,..)	24
Show Settings	24
DMX input type	24
Trigger Channels:.....	24
Parameter Channels:	24
Patch Selector Channel:	25
Patch Display offset Channel:	25
Brightness Channel.....	25
Contrast Channel	25
Master volume channel	25
MIDI input type.....	25
Trigger Channels:.....	25
Trigger Notes:	25
Parameter Channels:	25
Patch Selector Controllers:	25
Patch Display offset Controllers:	25
Brightness Controller:.....	25
Contrast Controller:	25
Master volume channel	26
Edit parameters for visual presets	26
Visual / Playback	26
Loop Mode	26
Speed:.....	27
Loop In / Loop Out	27
Effect Configuration	27
Triggers:.....	27
KEY	27
DMX	27
MIDI.....	27
Position Parameters	28
Presets	28
Shapes	28
Auto Rotate	28
Mixing Parameters	29
Max. Transparency	29
Color Levels (Red/Green/Blue):	29
Copy Mode.....	29
Mask Mode – Chroma / Luminance Key	30
Mask Centre.....	30
Mask Size.....	30
Fade Time	30
Tiling.....	30
Using the software – Fixture Mode	31
The main window	31
Previews area	31
Master output area.....	31
Status Indicators	31

Layer parameter area.....	32
Visuals.....	32
Effects.....	32
Playback.....	33
Composition Modes.....	33
Mapping.....	35
Position.....	35
Output.....	35
Media Types	36
Video	36
Alpha source support	36
Images	36
Audio	36
Generators	37
Effects.....	37
Cameras / External Sources	37
Libraries	38
Library Management	38
Overview and Library Concept.....	38
Root Folder	38
Media Folders and Naming Conventions	38
Building your libraries	40
Adding visuals to the library	41
Removing visuals from the library.....	41
Moving visuals in the library.....	41
Renaming folders.....	41
File system	41
Changing the root folder.....	42
Text Library	43
Preferences Dialog	44
Application Tab (MediaMaster Pro only)	44
Output Tab	44
Instant mode	44
Full screen Display.....	44
Resolution	45
Multi-Display arrangement (Windows only).....	45
Soft Edge Span.....	45
Geometric correction & Soft-Edge per output (MediaMaster Pro)	46
Geometric correction	46
Soft Edge per Output.....	47
Test grid and pattern	48
Video Mapper mode (MediaMaster Pro).....	48
Display options.....	48
LED Mapper	48
Kling-Net	48
Engine Accuracy.....	49
Timing Reference.....	49
DMX Tab	50

DMX Interface	50
Patch (Fixture mode only)	51
MIDI Tab (Simple mode only)	51
Audio Tab	51
Driver Type	51
Input Device	51
Output Device	52
Buffer Size	52
Hardware setup (Windows only)	52
Performances Tab	52
Preview style	52
Preview quality	53
Flash Frame Rate Factor	53
Movie playback threads	53
Registration Tab	53
Application Menus	54
File	54
Edit	54
Display	54
Wide-screen & Multi-screen presentation	55
Introduction	55
Definitions	55
Wide screen	55
Multi-screen	56
Case studies	56
Case 1: Dual head graphic card	56
Case 2: Dual head graphic card + single head graphic card	57
Case 3: Dual head graphic card + additional hardware	57
Other possible combinations	57
Wide-screen or multi-screen projection – Setup	57
Monitors setup under Windows Vista and Windows 7	57
Monitors setup under Windows XP	59
Monitors setup under Mac OS X	60
Soft-Edge	61
Calibration	63
Video Mapping	64
Concept	64
Hardware setup	64
Mapping workflow overview	64
Video Mapper application	65
Interface overview	65
Display Browser	65
Surface Editor	65
Inspectors	65
Setting up displays and surfaces in the display browser	65
Masks	67

Cropping.....	67
Visual Sources	68
Export and Import of Mapping Files	68
Tool bar options.....	68
Key Bindings	69
Output management in MediaMaster Pro.....	70
Groups.....	70
DMX (Fixture mode only)	70
Pixel Mapping over Kling-Net.....	71
Concepts	71
Hardware setup.....	72
Mapping workflow overview.....	72
Kling-Net mapper application.....	73
Overview	73
Device lists.....	74
The canvas.....	74
Templates	75
Screen grabber	76
Display LED mapping in MediaMaster.....	77
While the Kling-Net mapper is running.....	77
While Kling-Net Mapper is not running.....	77
Pixel Mapping over DMX.....	78
Performance tips	79
Monitor Rate Versus Movie Rate	79
Hardware dependencies	79
OS dependencies.....	79
Windows OS.....	79
Mac OSX.....	79
Preview windows.....	80
Movie Compression	80
Fixtures DMX Chart – Pro Version	81
Layer Mini 1.0.....	81
Layer Tiny 1.0.....	82
Layer Full 1.1.....	82
Layer Full 1.0.....	85
Master Small 1.0	85
Master Full 1.0.....	85
Master Full 1.1.....	86
Terminology / Glossary of Terms	87
Support, Information and Contact	89
Solutions	89
ArKaos Users Forum.....	89
Knowledgebase articles	89
Trouble Ticket System	89
Distributors and resellers	89

ArKaos Software License

WARNING:

DO NOT INSTALL THIS SOFTWARE UNTIL YOU HAVE READ AND ACCEPTED ALL THE TERMS OF THIS LICENSE. YOUR INSTALLATION OF THIS SOFTWARE WILL BE DEEMED TO BE YOUR ACCEPTANCE OF THE FOLLOWING TERMS AND YOUR WISH TO BECOME THE LICENSEE OF THIS ARKAOS SOFTWARE, WHICH ACCEPTANCE SHALL BIND YOU AND ALL OF YOUR EMPLOYEES, AGENTS OR OTHER PARTIES WHO WILL USE THIS SOFTWARE TO THE TERMS OF THE SAID LICENSE.

The ArKaos Corporation (S.A. ARKAOS, Chaussée de Waterloo, 198 B-1640 Rhode-Saint-Genèse - Belgium) is authorized to license the software of this installation (the ArKaos MediaMaster Software) and by installing the licensee accepts a non-exclusive, non-transferable License to "Use" (as hereinafter defined) the ArKaos MediaMaster Software ("Software") on a single computer system ("The System"), subject to the terms and conditions contained herein.

This License entitles the Licensee to:

- (a) make up to three installations of the one copy of the Software contained in this package on the System;
- (b) use the Software strictly in accordance with the provisions of Clause 2 of this License;
- (c) receive the benefit of the warranty specified herein;

1. Acceptance of this License.

The terms and conditions of this License are deemed to be accepted by the parties as follows:

- (a) by the Licensor upon dispatch/delivery by the Licensor of this package to the Licensee, and
- (b) by the Licensee by installing the software.

2. Use of the Software.

For the purposes of this License "Use" shall mean and include:

- a. Utilising the whole or any part of the Software on ONE machine at a time. Utilising means loading, transferring, copying or transmitting the Software into or within the single computer system for the processing of the system instructions or statements contained in the Software.
- b. Merging the whole or any part of the Software in machine-readable form into another software program.
- c. Copying the whole of the Software, which is in machine-readable form, into a machine readable copy for Use by the Licensee solely on the System and for the purpose only of understanding the contents of such readable material and for back up, PROVIDED THAT no more than one (1) copy will be in existence under any License at any one time without prior written consent from the Licensor.
- d. Storing the whole or any part of the Software on the System or other storage unit or disk.
- e. Utilising (but not copying) the instructional and/or operational manuals relating to the Software.
- f. EXTRA SERIALS: With your purchase of the Software you will receive a unique Purchase Key. This Purchase Key shall be used to register the software on www.arkaos.net. The Purchase Key and will allow you to generate a serial number that will unlock the protection in the Software. For each Purchase Key registered on your account on www.arkaos.net, you will also be able to generate two extra serials.

These two extra serials are for your facility to use in case you need to reinstall the Software due to:

- changing vital parts of your machine so that the Software protection can not identify your machine anymore
- replacing the machine by a another one

This license gives you the right to obtain three serial numbers in total. Once they have all been used, this license doesn't give you right to obtain additional serial numbers. Although the software protection cannot enforce this restriction, the extra serials must not be used to activate the software on an additional machine.

3. Licensee's Undertakings:

The Licensee undertakes:

- a. Not to copy (other than for normal System operation and as specified in Clause 2 above), reproduce, translate (including electronic transfer), adapt, vary or modify the Software nor to communicate the same to any third party without the Licensor's prior written consent.
- b. To supervise and control Use of the Software in accordance with the terms of this License.
- c. To ensure that its employees, agents and other parties who will use the Software are notified of this License and the terms contained therein, and this prior to the said employee, agent or party using the said Software.
- d. To reproduce and include the copyright notice of the Licensor on all and any copies, whether in whole or in part, in any form, including partial copies of modifications of the Software made herein.
- e. Not to provide or otherwise make available the Software in whole or in part (including where applicable, but not limited to, program listings, object code and source program listings, object code and source code), in any form to any person other than the Licensee's employees or as specified in (c) above without prior written consent from the Licensor.
- f. To refrain from amending the method of working of the Software by way of reverse engineering, (necessary information to achieve the interoperability of the Software being available for the Licensee from the Licensor).

4. Warranty.

- a. The Licensee acknowledges that software in general is not error-free and agrees that the existence of such errors shall not constitute a breach of this License.
- b. In the event that the Licensee discovers a material error which substantially affects the Licensee's use of the same and notifies the Licensor of the error within 90 days from the date of despatch of this License and the accompanying Software to the Licensee (the "warranty period"), the Licensor shall at its sole discretion either refund the license fee or use all reasonable endeavours to correct by patch or new release, also at its sole discretion, that part of the Software which does not so comply, PROVIDED THAT such non-compliance has not been caused by any modification, variation or addition to the original Software not performed by the Licensor or caused by its incorrect use, abuse or corruption or by use of the Software with other software or on equipment with which it is incompatible.

5. Source - Escrow.

The Licensor has established certain source code deposit arrangements ("accord de séquestre") covering the source code and documentation for the "ArKaos software" with the AGENCY FOR THE PROTECTION OF PROGRAMS (The A.P.P), W.T.C 10, route de l'Aéroport CH 125 Geneva. While this Agreement continues to exist, the Licensee will be entitled to receive the protection of such escrow arrangements in accordance with the rules and provisions of the "Procedure for the Applications of the Article 6 of the APP - IDDN - General Regulation".

6. The Licensor's Liability.

a. The Licensor shall not be liable to the Licensee for any loss or damage whatsoever or howsoever caused arising directly or indirectly in connection with this License, the Software, its use (whether or not as defined in this License) or otherwise, except to the extent that such liability may not be lawfully excluded.

b. Notwithstanding the generality of (a) above, the Licensor expressly excludes liability for indirect, special, incidental or consequential loss or damage which may arise in respect of the Software, its Use, (whether or not as defined in this License), the System or in respect of other equipment or property, or for loss of profit, business, revenue, goodwill or anticipated savings.

7. Patents, Trademarks, Copyright and Intellectual Property Rights.

a. The Licensee acknowledges that any and all of the trademarks, trade names, copyrights, patents and other intellectual property rights used or embodied in or in connection with the Software shall be and remain the sole property of the Licensor or such other party as may be identified therein or thereon.

b. The Licensee shall not during or at any time after the expiry or termination of this License in any way question or dispute the ownership by the Licensor or rightful owners of any such rights.

c. The Software, all copies of the software and derivative works based upon the Software or any part thereof remain the property of the Licensor.

d. The Licensee shall indemnify the Licensor fully against all liabilities, costs and expenses which the Licensor may incur as a result of work done in accordance with the Licensee's specifications involving infringement of any copyright patent or other proprietary right.

8. Confidential Information.

All information, data, drawings, specifications, documentation, software listings, source or object code which the Licensor may have imparted and may from time to time impart to the Licensee, relating to the Software, is proprietary and confidential. The Licensee hereby agrees that it shall use the same solely in accordance with the provisions of this License and that it shall not at any time during or after expiry or termination of this License, disclose the same, whether directly or indirectly, to any third party without the Licensor's prior written consent.

The Licensee further agrees that it shall not itself or through any subsidiary, agent or third party modify, vary, enhance, copy, sell, lease, license, sub-license or otherwise deal in the Software or any part or parts, variations, modifications, copies, releases, versions or enhancements thereof or have any software or other program written or developed for itself based on any confidential information supplied by the Licensor.

9. Force Majeure.

The Licensor shall be under no liability to the Licensee in respect of anything which, apart from this provision, may constitute breach of this License arising by reason of force majeure, namely, circumstances beyond the control of the Licensor.

10. Assignment.

The Licensee shall not assign or otherwise transfer all or any part of the Software or this License without the prior written consent of the Licensor.

11. Waiver.

Failure or neglect by either party to enforce at any time the provisions hereof shall not be construed nor shall be deemed to be a waiver of that party's rights hereunder nor any way affect the validity of the whole or any part of this License nor prejudice that party's rights to take subsequent action.

12. Severability.

In the event that any of these terms, conditions or provisions should turn out to be invalid, unlawful or unenforceable to any extent, such term, condition or provision shall be withdrawn from the remaining terms, conditions and provisions, which shall continue to be valid to the fullest extent permitted by law.

13. Law.

The parties hereby agree that this License concluded between them and constituted on these terms and conditions shall be interpreted in accordance with Belgian Law.

14. Notices with respect to licenses administrated by MPEGLA.

MPEG-4 Video Decoders and/or Encoders Notice

THIS PRODUCT IS LICENSED UNDER THE MPEG-4 VISUAL PATENT PORTFOLIO LICENSE FOR THE PERSONAL AND NON-COMMERCIAL USE OF A CONSUMER FOR (i) ENCODING VIDEO IN COMPLIANCE WITH THE MPEG-4 VISUAL STANDARD (ÔMPEG-4 VIDEOÓ) AND/OR (ii) DECODING MPEG-4 VIDEO THAT WAS ENCODED BY A CONSUMER ENGAGED IN A PERSONAL AND NON-COMMERCIAL ACTIVITY AND/OR WAS OBTAINED FROM A VIDEO PROVIDER LICENSED BY MPEG LA TO PROVIDE MPEG-4 VIDEO. NO LICENSE IS GRANTED OR SHALL BE IMPLIED FOR ANY OTHER USE. ADDITIONAL INFORMATION INCLUDING THAT RELATING TO PROMOTIONAL, INTERNAL AND COMMERCIAL USES AND LICENSING MAY BE OBTAINED FROM MPEG LA, LLC. SEE [HTTP://WWW.MPEGLA.COM](http://www.mpegla.com).

AVC Royalty Product Notice

THIS PRODUCT IS LICENSED UNDER THE AVC PATENT PORTFOLIO LICENSE FOR THE PERSONAL AND NON-COMMERCIAL USE OF A CONSUMER TO (i) ENCODE VIDEO IN COMPLIANCE WITH THE AVC STANDARD (ÔAVC VIDEOÓ) AND/OR (ii) DECODE AVC VIDEO THAT WAS ENCODED BY A CONSUMER ENGAGED IN A PERSONAL AND NON-COMMERCIAL ACTIVITY AND/OR WAS OBTAINED FROM A VIDEO PROVIDER LICENSED BY MPEG LA TO PROVIDE AVC VIDEO. NO LICENSE IS GRANTED OR SHALL BE IMPLIED FOR ANY OTHER USE. ADDITIONAL INFORMATION MAY BE OBTAINED FROM MPEG LA, LLC. SEE [HTTP://WWW.MPEGLA.COM](http://www.mpegla.com).

AVC Sales to Codec Licensee Notice

THIS PRODUCT IS LICENSED UNDER THE AVC PATENT PORTFOLIO LICENSE. SUCH LICENSE EXTENDS TO THIS PRODUCT ONLY AND ONLY TO THE EXTENT OF OTHER NOTICES WHICH MAY BE INCLUDED HEREIN. THE LICENSE DOES EXTEND TO ANY OTHER PRODUCT REGARDLESS OF WHETHER SUCH PRODUCT IS INCLUDED WITH THIS LICENSED PRODUCT IN A SINGLE ARTICLE. ADDITIONAL INFORMATION MAY BE OBTAINED FROM MPEG LA, LLC. SEE [HTTP://WWW.MPEGLA.COM](http://www.mpegla.com).

15. Notice with respect to the libavcodec, libavformat and libavutil libraries originating from the FFMPEG project.

The libavcodec, libavformat and libavutil libraries are from the FFMPEG project. FFMPEG is a large project that allows recording, conversion and streaming of audio and video data. This product uses them to decompress MPEG based files. The author and primary copyright holder is Fabrice Bellard <fabrice.bellard at free.fr>. More information can be found at <http://ffmpeg.sourceforge.net>. The FFMPEG project is distributed under the GNU Lesser General Public License mentioned below.

GNU Lesser General Public License

Version 3, 29 June 2007

Copyright (C) 2007 Free Software Foundation, Inc. <<http://fsf.org/>>

Everyone is permitted to copy and distribute verbatim copies of this license document, but changing it is not allowed.

This version of the GNU Lesser General Public License incorporates the terms and conditions of version 3 of the GNU General Public License, supplemented by the additional permissions listed below.

0. Additional Definitions.

As used herein, "this License" refers to version 3 of the GNU Lesser General Public License, and the "GNU GPL" refers to version 3 of the GNU General Public License.

"The Library" refers to a covered work governed by this License, other than an Application or a Combined Work as defined below.

An "Application" is any work that makes use of an interface provided by the Library, but which is not otherwise based on the Library. Defining a subclass of a class defined by the Library is deemed a mode of using an interface provided by the Library.

A "Combined Work" is a work produced by combining or linking an Application with the Library. The particular version of the Library with which the Combined Work was made is also called the "Linked Version".

The "Minimal Corresponding Source" for a Combined Work means the Corresponding Source for the Combined Work, excluding any source code for portions of the Combined Work that, considered in isolation, are based on the Application, and not on the Linked Version.

The "Corresponding Application Code" for a Combined Work means the object code and/or source code for the Application, including any data and utility programs needed for reproducing the Combined Work from the Application, but excluding the System Libraries of the Combined Work.

1. Exception to Section 3 of the GNU GPL.

You may convey a covered work under sections 3 and 4 of this License without being bound by section 3 of the GNU GPL.

2. Conveying Modified Versions.

If you modify a copy of the Library, and, in your modifications, a facility refers to a function or data to be supplied by an Application that uses the facility (other than as an argument passed when the facility is invoked), then you may convey a copy of the modified version:

a) under this License, provided that you make a good faith effort to ensure that, in the event an Application does not supply the function or data, the facility still operates, and performs whatever part of its purpose remains meaningful, or

b) under the GNU GPL, with none of the additional permissions of this License applicable to that copy.

3. Object Code Incorporating Material from Library Header Files.

The object code form of an Application may incorporate material from a header file that is part of the Library. You may convey such object code under terms of your choice, provided that, if the incorporated material is not limited to numerical parameters, data structure layouts

and accessors, or small macros, inline functions and templates (ten or fewer lines in length), you do both of the following:

- a) Give prominent notice with each copy of the object code that the Library is used in it and that the Library and its use are covered by this License.
- b) Accompany the object code with a copy of the GNU GPL and this license document.

4. Combined Works.

You may convey a Combined Work under terms of your choice that, taken together, effectively do not restrict modification of the portions of the Library contained in the Combined Work and reverse engineering for debugging such modifications, if you also do each of the following:

- a) Give prominent notice with each copy of the Combined Work that the Library is used in it and that the Library and its use are covered by this License.
- b) Accompany the Combined Work with a copy of the GNU GPL and this license document.
- c) For a Combined Work that displays copyright notices during execution, include the copyright notice for the Library among these notices, as well as a reference directing the user to the copies of the GNU GPL and this license document.
- d) Do one of the following:

0) Convey the Minimal Corresponding Source under the terms of this License, and the Corresponding Application Code in a form suitable for, and under terms that permit, the user to recombine or relink the Application with a modified version of the Linked Version to produce a modified Combined Work, in the manner specified by section 6 of the GNU GPL for conveying Corresponding Source.

1) Use a suitable shared library mechanism for linking with the Library. A suitable mechanism is one that (a) uses at run time a copy of the Library already present on the user's computer system, and (b) will operate properly with a modified version of the Library that is interface-compatible with the Linked Version.

e) Provide Installation Information, but only if you would otherwise be required to provide such information under section 6 of the GNU GPL, and only to the extent that such information is necessary to install and execute a modified version of the Combined Work produced by recombining or relinking the Application with a modified version of the Linked Version. (If you use option 4d0, the Installation Information must accompany the Minimal Corresponding Source and Corresponding Application Code. If you use option 4d1, you must provide the Installation Information in the manner specified by section 6 of the GNU GPL for conveying Corresponding Source.)

5. Combined Libraries.

You may place library facilities that are a work based on the Library side by side in a single library together with other library facilities that are not Applications and are not covered by this License, and convey such a combined library under terms of your choice, if you do both of the following:

- a) Accompany the combined library with a copy of the same work based on the Library, uncombined with any other library facilities, conveyed under the terms of this License.
- b) Give prominent notice with the combined library that part of it is a work based on the Library, and explaining where to find the accompanying uncombined form of the same work.

6. Revised Versions of the GNU Lesser General Public License.

The Free Software Foundation may publish revised and/or new versions of the GNU Lesser General Public License from time to time. Such new versions will be similar in spirit to the present version, but may differ in detail to address new problems or concerns.

Each version is given a distinguishing version number. If the Library as you received it specifies that a certain numbered version of the GNU Lesser General Public License "or any later version" applies to it, you have the option of following the terms and conditions either of that published version or of any later version published by the Free Software Foundation. If the Library as you received it does not specify a version number of the GNU Lesser General Public License, you may choose any version of the GNU Lesser General Public License ever published by the Free Software Foundation.

If the Library as you received it specifies that a proxy can decide whether future versions of the GNU Lesser General Public License shall apply, that proxy's public statement of acceptance of any version is permanent authorization for you to choose that version for the Library.

Introduction



Welcome to MediaMaster Version 3!

The ArKaos MediaMaster software has been created to offer an intuitive solution for the control of video media, animations and live picture inputs.

It is a media server software that offers playback and real-time manipulation of clips, images and live feeds as well as flash text animations and real-time visual effect generators.

The MediaMaster environment runs on both Windows and MAC OS platforms and integrates with your system hardware to offer a professional performance solution customised to your needs.

Documentation

The present User Guide covers all the aspects of MediaMaster Express and Pro version 3.0, including their extensions (LED Mapper, Kling-Net Mapper, Video Mapper, ..). Any changes, or any addition in the next intermediate releases (3.1, 3.2 etc..) will be detailed in the Release Notes PDF document, which can be found in the software installation folder on your computer.

The Release Notes document completes this User Guide.

Express vs Pro

MediaMaster has two distinct user interfaces both with the power of the ArKaos engine: the Simple mode and the Fixture mode interface.

The Simple mode allows easy hands-on control via DMX, MIDI or even a computer keyboard.

The Fixture mode offers a comprehensive fixture style interface for direct control over DMX off all parameters and attributes.

MediaMaster is available in two different editions: Express and Pro. The Express edition is limited to the Simple mode interface and 8 layers of video, while the Pro edition enables both the Simple mode and Fixture mode interface, 12 layers of video and the Video Mapper extension.

Soft-Edge and Pixel-mapping control over DMX & ArtNet are available in both version but MediaMaster Pro adds a Geometric Correction module including advanced Soft-Edge settings per output and the Video Mapper extension for easy mapping of video onto irregularly shaped surfaces and through multiple outputs.

We hope you will enjoy using the software as much as we have enjoyed creating it for you!

Sincerely, The ArKaos team

Installing the software - PC

To install the MediaMaster software, insert the MediaMaster installation CD into your computer's CD-ROM drive. Double-click on the MediaMaster installation file, located in the root directory of the CD. This will launch the InstallShield Wizard.

Follow the on-screen instructions.

Note:

The installation program will scan the available video player components on your computer prior to installing the software. If there are any components that are not up to date, please install them by clicking on their corresponding button before proceeding with the installation.

Once the installation is complete, click "Finish". The MediaMaster software is now ready to be used.

Start MediaMaster by going to Start -> ArKaos MediaMaster -> MediaMaster.

To activate your copy, follow the registration process described on page 10 in this document.

Installing the software - Mac

To install the MediaMaster software, insert the MediaMaster installation CD into your computer's CD-ROM drive. Click on the MediaMaster installer package located in the root directory of the CD. This will launch the Installer Wizard.

Follow the on-screen instructions.

The installer will add a shortcut to MediaMaster App on your desktop. The application will be installed in your Applications/ArKaos MediaMaster folder.

Start MediaMaster by double clicking the shortcut.

To activate your copy, follow the registration process described on page 10 in this document.

About your license

Your software box comes with an Activation Code inside. It is very important that you keep this code in a safe place since it is the proof that you own a license and it might be needed in the future to re-install the software or to obtain upgrades.

The Activation Code, however, is not the final serial number that will activate the software on your computer. To be able to run the software without limitations, you will need to create a serial number by following the instructions here after.

Note:

MediaMaster comes in two distinct editions: Express and Pro, please refer to “Express vs Pro” 8 for more info.

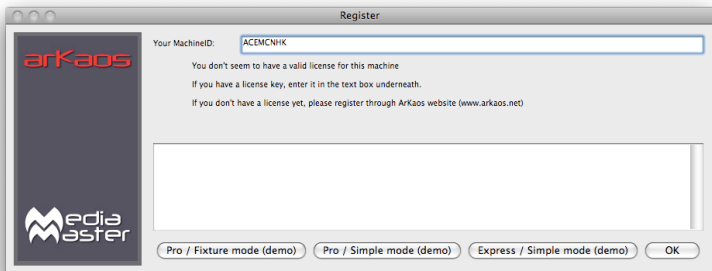
Obtaining your serial number from the ArKaos web site

Preparing your Machine ID code

Once the latest version of the software is installed on your computer, you will need to locate your Machine ID code: The Machine ID is an 8 capital letters code (e.g. ABCDEFGH) generated by MediaMaster when installed on a computer.

This code is unique and is necessary to generate a final serial number, which will only work in combination with your computer’s Machine ID code. This means that your serial number will only work to activate the software on that particular computer.

When you launch the application for the first time, it will display a “Registration” dialog.



The Machine ID is displayed at the top of that dialog.

About the Demo Mode

Note that, from the “Registration” dialog you can also choose to run the software in demo mode. If you do so, the software will still be fully functional but a ‘demo’ banner will be displayed randomly above the output.

There are two possible demo modes related to the different MediaMaster editions: Express and Pro, please refer to “Express vs Pro” 8 for more info.

Note:

If you are not sure of your hardware setup and / or computer performance and you wish to make tests to decide whether you will use MediaMaster on a computer or not, we recommend to do so in demo mode since the software is fully functional in this mode.

The demo mode also allows you to understand the differences between the Pro and the Express edition by letting you test the simple mode interface or the fixture interface.

Only generate the final serial number to activate the software on a given setup when you are sure to use the software on that setup because you cannot reclaim a used serial number later.

Generating your final serial number

You will first need to register the Activation Code that you found in your software box and create an ArKaos customer account (if you don't have one already).

Prepare all the info you will need:

- The Machine ID from the computer you want to generate a serial for
- The Activation Code that you received with the software package or by e-mail

Go to <http://www.arkaos.net/register/>

On the page, you will have the opportunity to either login to an existing customer account or to create one if you are not registered.

Once you have created an account/login, you will be directed to a form where you can register your Activation Code and at the same time obtain your serial number by submitting your Machine ID code.

Once you've entered your Machine ID and submitted the form, a serial number will be automatically generated and you will receive a confirmation email with the generated serial number so you can use it in the software registration screen.

Note:

This process can be done from any computer connected to the Internet, so you can obtain a serial for a computer that is not connected; just be sure to use the Machine ID code from the computer where you will use MediaMaster.

Introduction to the software

MediaMaster is a unique media server and visual effects software solution, which allows you to quickly create dynamic visual presentations.

ArKaos has long been established as a leading software developer for media control and the MediaMaster software has been designed to be as comprehensive in its functionality as possible and as such offers the perfect solution for the seamless real time integration of video into live performance, theatre, concerts and presentations.

Control Concepts

Simple Mode interface

The simple mode interface of MediaMaster marks a new phase in software development allowing you to make use of the latest dynamic visual effects combined with an efficient and intuitive library management system and with simple front end control via DMX, MIDI or even a computer keyboard.

There are numerous attributes that must be defined to allow control of visuals in media servers – including content selection, playback speed, effects, size and position, keystoning etc. When these are directly controlled by a lighting console, such as with MediaMaster Pro's fixture interface, they can require a substantial number of control channels.

MediaMaster' Simple Mode interface allows you to make these decisions in the software itself and then simply take control of these visual presets using a few channels on your lighting desk or notes on a MIDI controller.

Controlling the playback in the Simple Mode interface is much the same as using a dimmer to control a conventional fixture: think of rigging a profile light for a show – you decide first where to hang it, what color it should be, if you need a gobo or other effect's device such as a scroller or animation disc. Once the fixture is rigged, prepared and focused you then only need to change the level of its dimmer as and when you require it in the show.

Using the Simple Mode is the same – on the software you create the visual combination you want – define the content, any effects, playback speed etc.. and then with your external controller simply fade it in an out as required during your show.

Just like with a lighting system you can have multiple instruments – or in this case layers - to build your final show from.

As such the Simple Mode gives you the same flexibility and control over your media as with a fixture based control solution but with an unprecedented ease of use.

Fixture Mode interface

MediaMaster Pro adds a fixture-based operation mode and as such acts as a traditional Media Server for professional lighting consoles such as ChamSys, Avolites, LSC, ETC, GrandMA, Martin, Compulite, etc..

The fixture profiles allows total control of every MediaMaster parameter straight from the DMX console.

To be able to send DMX commands to the server, you will need to set it up so it can communicate with your console. MediaMaster supports two different type of DMX connectivity: either using ArtNet or using a DMX USB widget.

Features Summary:

Outputs

MediaMaster is designed to work best with a minimum of a dual output computer system where the main screen shows the user interface and an output preview and the second screen (or screens) show the full resolution output image – this would normally be connected to a projector, screen, video mixer or LED display device.

In MediaMaster, there are three types of output:

- Display outputs: "Displays" are the devices that are connected to the computer graphical card(s) using DVI, HDMI, DisplayPort or VGA connectors.
 - In Instant mode, there's a single output called "Full screen Display" that correspond to the full screen display (or multiple displays) that's selected directly in the preferences.
 - In Video Mapper mode, there are as many outputs as surfaces that are defined using the "Video Mapper" application.
- LED Mapper output: a set of LED devices controlled by the DMX protocol. The output mapping is defined using the "LED Mapper" application.
- Kling-Net output: a set of LED devices controlled by ArKaos Kling-Net protocol. The output mapping is defined using the "Kling-Net Mapper" application.

You can switch between Instant and Video Mapper Display modes, and activate LED Mapper and Kling-Net outputs in the Output tab of the Preferences window.

MediaMaster 3.0 introduces a brand new way to assign visuals to outputs. Each layer in the application can be assigned to a single output or a group of outputs that are defined within the application.

You can create groups using the dedicated "Output" dialog that's accessible in the "Outputs Management" menu item (CTRL + O / Cmd + O).

There are numerous ways to configure your outputs, which are discussed later in this manual.

Visual Presets – Simple Mode interface

In the Simple Mode interface the choice of playback visuals is organized into patches and you can create up to 64 patches with up to 64 visual presets in each patch – that's 4096 possible visual presets for each media library.

Media Management (Express and Pro)

As its name suggests MediaMaster can handle numerous different types of media sources – including video, flash, quartz compositions, images, external cameras and sources and even audio when attached to a video file.

These media files are organized into library folders in exactly the same way that you would create and manage files on the computer. There are 256 library folders and each folder can have up to 255 individual pieces of media (one media file is always kept as a blank slot by the software).

Some of the library folders in ArKaos are pre-defined for specific duties – such as camera feeds or text effects - and these will be covered in a later section of this manual. It is also possible to have more than one library and this is also covered later.

Note:

Think of the media management as a set of filing cabinets – you have a total of 256 drawers and each draw can store 256 files in it. By creating a good filing practice you can quickly and easily find the content you need.

For example you can group clips by type or project into a specific folder so folder 001 has cloud animations, folder 002 has computer game visuals, folder 003 has slides for a specific event and so on and so forth.

With a possible media library of over 60,000 clips it can be really helpful to organise clips in this manner and make the recall of clips even more efficient.

In the Simple Mode your set-up configuration and show information is automatically saved into the library folder as it is created so the next time you boot the software you will have the exact set-up you last created. No need to keep saving – ArkKaos stores it all for you alongside your media library.

In the Fixture Mode your set-up configuration and preferences are saved with the software but as the show will be controlled driven via DMX your show settings would be stored on the lighting console or controller you use with the software.

Layers – Simple Mode

MediaMaster Express is capable of running 8 layers of media playback simultaneously and uses a LTP (last takes precedence) rule when more than 8 visual presets are selected.

The LTP rule means that the software automatically moves visual presets when layers become empty so that any new cues always jump to the highest (top) layer available.

For example if you activate visual presets 1 through 8 in sequence so that each one is running on a different layer simultaneously and then activate visual patch 9 the first patch you selected (which was allocated to layer 1) will be removed and all of the patches move up a layer – so the patch on layer 2 moves to layer 1 and so on.

If you fade out one layer – for example the patch on layer 4 – then the layers automatically move up – so the patch on layer 5 moves to layer 4 and so on.

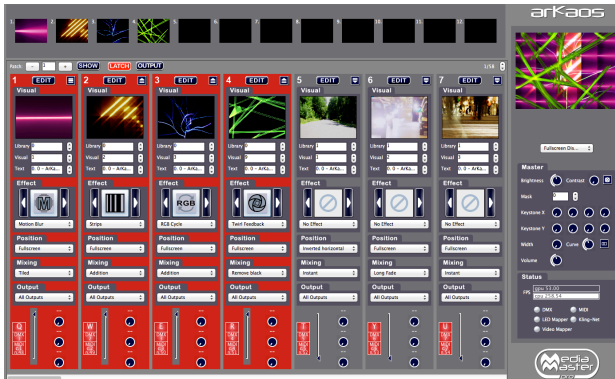
It will work the same way when running MediaMaster Pro in Simple Mode except that you will have access to 12 layers.

The resolution of the video content is limited only by what your computer hardware can handle so with the right hardware 12 layers of High Definition (or greater) video is more than possible.

Software Interface Overview

Simple Mode interface

The software comprises one main patch and preview window, which displays the main information needed during configuration and performance. The output of each of the running layers is shown along with a master preview (a reflection of what is sent to the full screen output). The window also displays the visual patches from the selected patch and a master control panel to define characteristics of the master output.



Key features

- 12 layers (Pro edition) or 8 layers (Express edition) of simultaneous video playback.
- 64 Visual presets patches, each containing 64 visual presets.
- Direct access to visual presets and global controls via DMX, MIDI or Keyboard.
- Each visual preset is completely configurable in the software to define the following parameters:
 - Visual selected
 - Playback mode
 - Movie Speed
 - Loop start and end frame
 - Effect and effect control parameters
 - Trigger for control (Keyboard, DMX, Midi)
 - Controller configuration for live effect control
 - Position and size of the layer output
 - Mixing style with other layers including:
 - Maximum transparency
 - Red / Green / Blue Levels
 - Copy Mode
 - Mask Mode
 - Default Fade Time
 - Tiling
- Master section allowing to control the following parameters:
 - Brightness and contrast
 - Keystoning
 - Soft edge parameters
 - Audio output volume

Fixture Mode interface – MediaMaster Pro

The Fixture Mode interface available in MediaMaster Pro is organized along one main window that displays most of the information needed during a performance. It shows the 12 individual layer outputs as well as the master preview (the reflection of what is sent to the full screen output) and a parameter panel allowing accessing and modifying the settings for each layer.

Parameters can be either modified through the user interface or from the DMX console. If you modify a parameter on the user interface, it will keep its value unless a change happens in DMX values. It then re-syncs to the value sent by the console.

In order to drive MediaMaster from a DMX console, you will need to select in your console a fixture that is compatible with the software. Within MediaMaster there are couple of different fixture types in order to allow control of the software from small to high-end consoles with a different set of parameter controls available with each fixture type. An extensive description of the fixture types is available later in this document in the "Fixtures DMX Chart – Pro Version" section 81.

Key features

The software provides for up to 12 layers of video. Each layer can run one visual and one effect, and gives DMX control over the following parameters:

- Visual selected (a visual is either a video, an image, a text, or an input from a camera or an acquisition board...)
- Text (selectable text displayed in text animations)
- Layer transparency (dimmer)
- Effect and parameters
- Position and size of the layer output
- Copy mode to blend with underlying layer
- Playback mode
- Movie Speed
- Chrominance and Luminance Keying
- Movie start and end frame
- Tiling
- Mapping on 3D objects (plane, sphere, cylinder)
- 3D Object rotation
- Color control
- Output selection and edition

Additionally, after all layers have been composed, there is a master section allowing to control the overall brightness and contrast, keystoneing, soft-edge and volume parameters.

Full Screen Output

By default, when you start the software, the full screen output is not enabled. If you want to activate the full screen either by selecting the menu Display > Toggle Full screen or by pressing CTRL+F on Windows / Cmd+F on Mac.

The full screen output can be launched automatically when the application is started by setting this as default in the preferences (see 44 for further details)

If you don't have a dual output setup configured then the full screen will be activated on the main screen and the main interface will disappear. To exit the full screen mode, press CTRL+F / Cmd+F again.

For more information on setting up a dual output system, see the "Preferences Dialog" 44 and the "Wide-screen & Multi-screen presentation" 55 in this document.

Connecting an External Controller

Setting up DMX Control

To be able to control MediaMaster via DMX, you'll need to set it up so it can receive information from your console. MediaMaster supports two different types of DMX connectivity: either using ArtNet or using a DMX USB widget.

Using ArtNet

If your console supports ArtNet, you simply have to connect an Ethernet cable from the console to the computer running the MediaMaster software.

On Mac computers the hardware is usually auto sensing so a standard network cable may be used. On Windows computers you may need a crossover cable if linking directly between the console and the computer running Media Master.

MediaMaster presents itself as an ArtNet Node that receives all incoming DMX data on a selected range of DMX universes. For your computer to appear on the ArtNet network, you need to set its IP address within the range of the network – this is usually something like 2.X.X.X with an IP mask of 255.0.0.0 (this can be done in the control panel on Windows or System Preferences on MAC OS)

If you decide to use MediaMaster using the ArtNet protocol, go in the Preferences Dialog and, in the DMX tab, select 'ArtNet' as DMX Interface and set the subnet and universes you want to be listening to.

Note:

Like any lighting fixture or dimmer MediaMaster will "listen" to all channels on the selected universe but only respond to the channels it is addressed to. It is quite feasible therefore to have other fixtures using different addresses on the same universe in much the same way as you could use a variety of moving lights, dimmers and LED's all on the same universe.

For more information about ArtNet network configuration, check out the Artistic License web site at <http://www.artisticlicence.com/>.

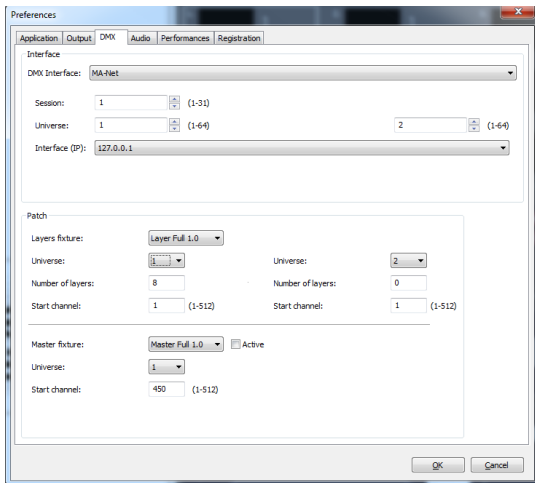
MSEX implementation (Pro edition only)

MSEX stands for Media Server Extension and is a protocol that runs on top of DMX over Ethernet allowing for bi-directional communication between the media server and console. This allows for information on specific items to be passed from MediaMaster to the console. This includes media (images and video); effects; cues; crossfades; masks; blend presets; effects presets; and image presets.

Since version 2 MediaMaster's MSEX implementation is fully compatible with ChamSys and Computite consoles. MediaMaster complies with the MSEX version 1.1 specifications, including thumbnails and live preview for visuals.

Support for grandMA MA-Net (Windows Only)

MediaMaster can now be directly driven from grandMA consoles supporting the MA-eDMX protocol. To activate MA-Net, go to the DMX tab in the Preferences Dialog and select "MA-Net" from the DMX Interface drop down box:



You will need to specify the session number and universe you want to work with as well as the IP address of the interface you will receive MA-Net from. MediaMaster currently only supports MA-net1.

Using an Enttec DMX USB Pro device

The DMX USB device is a small DMX input adaptor that can be connected to the computer through a USB port. To be able to use the device, you will need to follow a simple installation procedure.

Setting up an Enttec DMX USB Pro device on a PC

The Enttec DMX USB Pro will ONLY work with the D2XX drivers and not the VCOM drivers.

This is a change from version 1.0 where MediaMaster was using the VCOM drivers. If you already installed the VCOM drivers this is not a problem because both can coexist on the same machine.

If you're setting up MediaMaster on a new Windows system you will not have to install the VCOM drivers separately, just install MediaMaster and it will work.

To use the device, start MediaMaster and select the Enttec DMX USB Pro in the DMX tab of the preference window.

If the Enttec DMX USB Pro device installation was not successful or if the device is not correctly connected to the computer, the interface won't be listed in the selection of DMX Interfaces.

Setting up an Enttec DMX USB Pro device on a Mac OS X

The Enttec DMX USB Pro will ONLY work with the D2XX drivers and not the VCOM drivers.

This is a change from version 1.0 where MediaMaster was using the VCOM drivers. Under Mac OS X if the VCOM driver is installed it will prevent MediaMaster to work with the D2XX interface.

To avoid this you can delete the VCOM driver by opening a terminal window and typing:

```
sudo rm -rf /System/Library/Extensions/FTDIUSBSerialDriver.kext
```

You can also open the /System/Library/Extensions folder and delete the file FTDIUSBSerialDriver.kext if present

You will need to have Administrator privileges on the system to do this. You will also need to reboot the computer after you have deleted the file.

If you're setting up MediaMaster on a new Mac OS X system you will not have to install the VCOM drivers separately, just install MediaMaster and it will work.

If the Enttec DMX USB Pro device installation was not successful or if the device is not properly connected to the computer, the interface won't be listed in the selection of DMX Interfaces available in the Preferences dialog.

Setting up MIDI Control

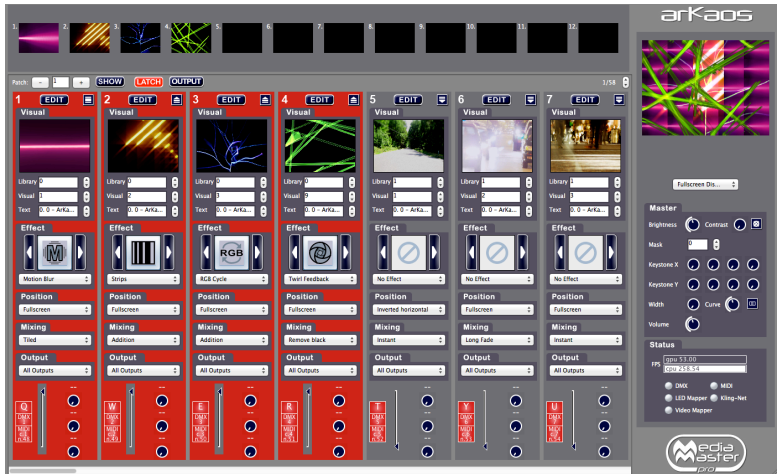
To be able to control MediaMaster via MIDI, you will just need to have a MIDI device connected and properly installed on your system before starting the application.

Then, from the MIDI input type tab from the Show Settings dialog (see 24) you can check the device availability and define how the software will respond to the MIDI signals from your controller.

Using the Software – Simple Mode

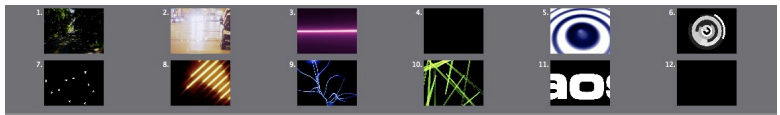
The main window

The main software window has been designed to include all the principal configuration information in a single window allowing for intuitive and efficient live operation.



The main window is arranged in three main areas:

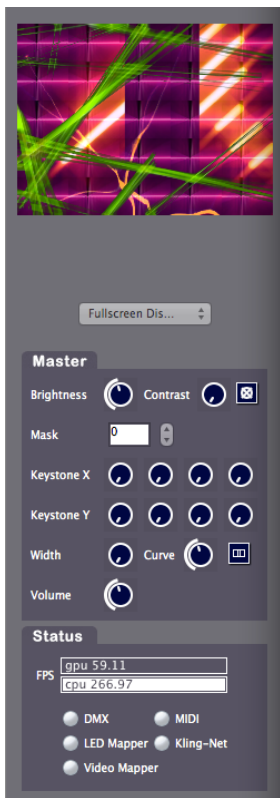
Layer Output Previews



Across the top of the window are 8 (MediaMaster Express) or 12 (MediaMaster Pro) small layer preview boxes showing the content of each layer.

Content is allocated to each layer on an LTP basis during playback of the visual presets. As such if you are running content of layers 1 thru 4 and then fade out the content on layer 3, the content on layer 4 will move to layer 3 automatically and if you then activate another preset visual this will appear on layer 4.

Master Output



To the right hand side of the software window is the master output section.

At the top of this is a preview of the output to your external display coupled with an output selector. This preview shows the result of the composition of all the active layers on the selected output.

This allows you to see what is being sent to your external device and also to prepare and preview your show without the need to connect an external output.

Master output controls

Under the output preview are the master parameter controls. Below is a quick description of each control you can see in the picture on the left, in the next pages we'll describe how to use these settings in more detail.

- **Master brightness and contrast**

These global settings can be controlled either by mouse control or by defining remote DMX or MIDI channels for Brightness and Contrast from the "SHOW" dialogue box which can be opened using the button at the top of the visuals patch window.



- **Blackout button**

If the blackout button is selected then the external output will go to BLACK – but the preview window will still show the layer composition preview.

- **Mask selection (Instant mode only)**

Use it to recall a master mask from the library to overlay on the output.

- **Master Keystone Settings for X and Y (Instant mode only)**

These allow precise global keystone settings to be defined in order to digitally calibrate the output to ensure the best position of the visuals onto the screen or display unit.

- **Width and Curve settings for Soft-Edging (Instant mode only)**

When using a multi screen output these controls allow you to configure the blending zone between the two projectors – the width sets the size of the overlapping strip and the curve defines how strong the soft edge blending should be to ensure you can calibrate the overlap to a seamless image with even brightness.

- **Master Volume**

The "Volume" controls the volume of the output when your visuals contain some audio tracks. This way you can make sure that the audio plays in a proper way even when it has been recorded at different levels.

Note:

The aspect ratio of the layer preview is 4:3 ratio and therefore if you are working with an output of a different aspect ratio (for example 16:9 or a custom widescreen) the output will be shown "squashed to fit" within the preview window.

Masks (Instant mode only)

When a new media library is created the Masks folder is set as folder 255. Masks consists of black and white or grayscale jpeg images. When a mask file is recalled from this folder using the Mask selection in the master control the white is automatically removed and the black left in tact to create a mask over the top of the output layers content.

Note:

In addition to providing some interesting and unique shapes the mask function is particularly useful when working with circular or irregular shaped screens. By recalling a mask shape you can quickly and easily ensure that all content is masked to fit the screen.

Keystoning (Instant mode only)

You can alter the master keystone settings for the output using the virtual encoders on the master section of the main software window.



The Keystone functions on Media Master allow you to digitally keystone BOTH the Vertical and Horizontal sides of the image. The power and control offered by MediaMaster gives you far greater range and precision than that offered in the built in settings of most projectors.

Keystoning allows you to digitally alter the image in order to help fit the output to the screen. For example if the projector is mounted slightly off axis to the screen then you may choose to adjust the keystoning to give the impression of a flat image.

The keystone settings on MediaMaster allow you to modify the position of each of the four corners of the image within the output window by changing the X/Y coordinates of each corner.

Note:

Unlike using shutters on a profile light Keystoning does not cut or mask any of the image. Instead the action of Keystoning moves these corners but all pixels of output remain the same – they are just in different positions on the screen. MediaMaster automatically adjusts the pixel composition to fit within the new keystone parameters.

Keystoning only shows on the output window as it is directly related to the output display you are using. It is a global setting across the full width of the output display so for example if you are using two projectors side by side to make a single wide image then the keystone function will manipulate the top right and bottom right of one projector and the top left and bottom left of the other.

Soft Edging (Instant mode only)

Soft edging is used when several projectors are combined to build one big scene. In such cases, you often have to overlap the images sent by every projector in order to blend them correctly.

The two soft-edge parameters allow controlling the blending zone in between each projector: the width parameter sets the width of the overlapping strip while the curve defines how strong the soft-edge blending should be.

For more information about setting up soft-edge, refer to the “Preference Dialog” section about Soft Edge Span on page 45 and to the “Soft-Edge” chapter on page 59.

Status indicators

These give a summary of the current operational statistics including the FPS (frames per second) of the graphics processing unit (GPU) and the central processing unit (CPU) of the computer. The two FPS bars give performance information about the engine.

The first line (GPU) shows indication of the current frame rate. It is active only when in full screen. The value on the right (display) shows the display output FPS (60hz in this case).

The value on the left next to “GPU” shows the average frame rate of the engine. Ideally these values should be close to each other and the graph bar all the way to the right.

The second line (CPU) shows an indication of the activity from the CPU. The CPU is mostly used to decode video frames. Note that this value does not reflect the overall system CPU activity; it only reflects the CPU activity caused by MediaMaster.

Note:

If the CPU value drops down a lot (and most likely the GPU will too in that case), it means MediaMaster’s bottleneck is decoding frames. Either your video files are too heavy (check your compression settings) either you are hitting a hard drive bottleneck. In that latter case, you can try to upgrade to faster disks, use a RAID1 or reduce the bitrate of your video compression.

The status summary also indicates if DMX, MIDI control and LED output are currently active which are shown as three small “virtual LED’s” which “light up” when active.

Visual Preset and Preset Patch

The main portion of the software interface is used to display visual presets. Each preset visual may comprise the selection of a piece of media, text or real-time generator, the overlay of an effect, the definition of where that visual should be displayed on the output screen and the mixing style of that visual when added to the output.

At the top of the visual preset window is the patch selection, show settings and latch toggle functions. In Fixture Mode you can also find there the output function that holds the video mapper settings.

Note:

The visual preset is displayed as a vertical strip and this can be thought of in much the same way as the channel strip on an analogue audio console – input at the top and output at the bottom after effects, sends, and other parameters are defined.

At the top of each Visual Preset strip is the “input” visual – which you have selected from your library. If you have selected a Flash Text animation then you will also see a text box below the library and clip selection, which allows you to select a text string from your texts library.

Once you have selected the “input” media you can then use the effect box to apply an effect to it. You can also define the media position on the output screen (this will be detailed further in this document under “Position Parameters” at page 28). Then you can select the mixing preset that determines how the layer will compose with the other layers below.

With the output function you can select the outputs on which the layer will be rendered to, and you can control the output intensity of the preset visual either with the fader at the bottom of the preset visual strip or via DMX, MIDI or keyboard control.

Finally, you will find an EDIT button at the top of the visual strip, this will open a dialog where you can define in much greater detail the parameters of the visual preset (see “Edit parameters for visual presets” on page 26).

Note:

When a visual preset is active, the number at the top of the visual preset strip is highlighted in red.

Patch Selection



Each MediaMaster library can have up to 64 patches with 64 preset visuals in each patch. You can select the patch either by changing the number in the patch box – or by using a master patch selection channel via DMX or MIDI which can be defined in the show settings pop-up window.

Latch Toggle

The latch toggle function means that the selection of a Visual Preset will automatically latch until the toggle button is pressed again when it will be released. You can also define latch as a parameter option specific to a visual preset using the latch selection in the edit parameters window for that visual preset.

Note:

Whilst the latch toggle is perhaps most clearly relevant when using a computer keyboard it can also be of benefit when using an external controller with buttons rather than faders – such as a MIDI pad or DMX button wing – you are able to toggle layers on and off rather than having to keep the button pressed for the duration you require that Visual preset to be active. As you can define fade times for individual visual presets you will still be able to achieve smooth cross fades where required.

Managing Patch and Visual presets (Copy, Paste, Edit,..)

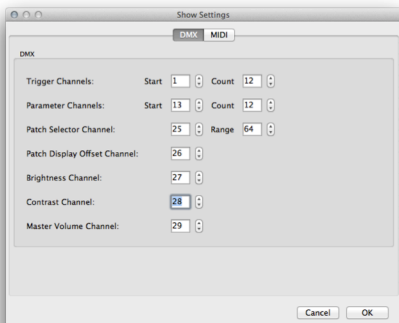
You can right click in the interface to bring a contextual menu. Depending on where you right click in the interface this menu will allow you to copy paste a patch or copy paste a visual preset. Other options in the contextual menu will allow you to clear a patch and open the visual preset editing window.

Show Settings



Clicking on the SHOW button opens a pop-up window where you can define DMX and MIDI settings for the show.

DMX input type



With DMX input type configured in the master preferences window of the software this DMX show setting window allows you to define how the software should respond to incoming DMX data on the configured universe.

Trigger Channels:

This defines what the first trigger channel should be and how many there are – you can have up to 255 trigger channels which will be allocated to each preset visual in order.

Parameter Channels:

Defines the number of parameter control channels you wish to use up to a total of 255. Each can be configured to operate a specific visual preset.

Patch Selector Channel:

This is the controller that can be used to change the active patch from a DMX controller.

Patch Display offset Channel:

If you only need to select a limited number of patch you can limit the range with this value.

Brightness Channel

This is the master brightness channel, which controls the master brightness (luminosity) of the software output.

Contrast Channel

This is the master contrast channel, which controls the master contrast of the software output.

Master volume channel

This master volume channel controls the output volume of the visuals that run with audio.

MIDI input type

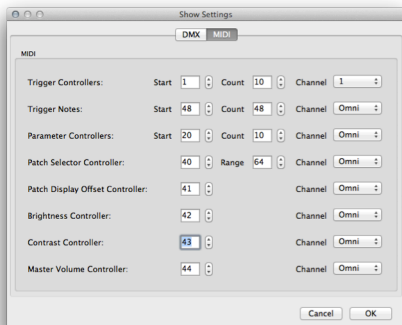
With MIDI input type configured in the master preferences window of the software this MIDI show settings configuration allows you to define how the software should respond to incoming MIDI data.

Trigger Channels:

This defines what the first trigger channel should be and how many there are – you can have up to 64 trigger channels which will be allocated to each preset visual in order.

Trigger Notes:

This defines what the first trigger note should be and how many there are – you can have up to 64 trigger channels which will be allocated to each preset visual in order.



Parameter Channels:

This defines the number of parameter control channels you wish to use up to a total of 127. Each of these channels can be configured to operate a specific visual preset.

Patch Selector Controllers:

This is the controller that can be used to change the active patch from a MIDI controller.

Patch Display offset Controllers:

If you only need to select a limited number of patch you can limit the range with this value.

Brightness Controller:

This is the master brightness channel, which controls the master brightness (luminosity) of the software output.

Contrast Controller:

This is the master contrast channel, which controls the master contrast of the software output.

Master volume channel

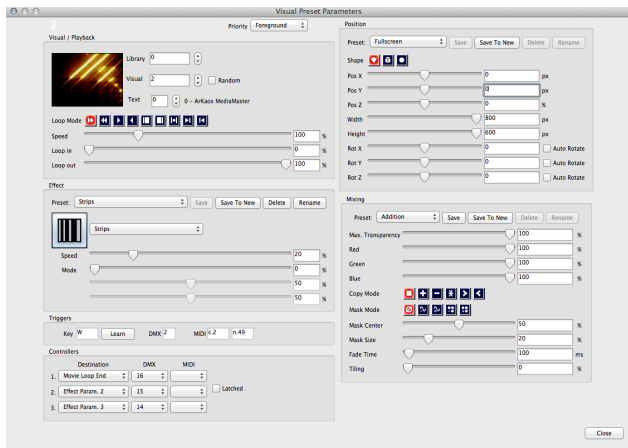
This master volume channel controls the output volume of the visuals that run with audio

Note:

The software supports MIDI input as long as the correct drivers are installed for your MIDI hardware. As such MIDI control surfaces, buttons, faders and keys with direct USB connection can also be used to provide a compact control surface.

Edit parameters for visual presets

At the top of each visual preset strip is an EDIT button. Clicking on this opens a dialog allowing detailed configuration of each of the parameters for that particular visual preset.



Visual / Playback

Here you can define the library and visual numbers in the same way as on the visual preset strip, but you can also specify the loop mode, speed and IN & OUT settings of the video playback.

When the clip has an audio track, the speed settings will affect the audio playback also.

Loop Mode

The 'Loop' setting controls the way the video plays and loops. The available settings are:

- Forward looping
- Backward looping
- Single shot forward (the video is played once then stops)
- Single shot backward (the video is played backward once then stops)
- Display first frame
- Display last frame
- Ping-pong (the movie plays back and forth)
- Single shot forward and freeze (the video is played once then stops on it's last frame)
- Single shot backward and freeze (the video is played backward once then stops on it's first frame)

Speed:

Defines the speed of the clip playback between 0% and 400%. You can change it with the slider or by entering a value (this will also affect the audio speed, if the clip has audio).

Loop In / Loop Out

These two sliders let you configure the start and end points of the loop. This is expressed as a percentage. You can change it with the slider or by entering a value.

Effect Configuration

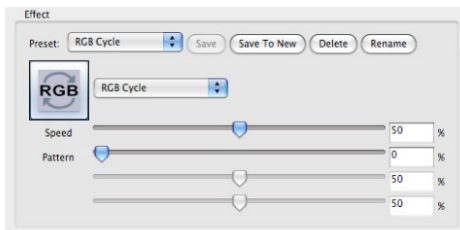
MediaMaster offers a large number of built in effects. On a computer running Mac OS you can also use the Quartz Composer Effects which are a part of the operating system.

These effects include 3D mapping, motion blur, color cycles, artistic graphic styles and many more. Each effect can be added to individual visual presets or defined on it's own visual preset where it will overlay and effect across the complete output when recalled.

Each effect has up to four modifier parameters (i.e. speed, motion, intensity etc..) which can be defined in every instance of its use.

Once you have customized an effect and its parameters you can store this as a new preset effect (using the "Save to New" button), so you can build your own custom library of effects with parameters adjusted to your needs.

Once you have created your custom library of effects, they can be quickly accessed in the effect section of the visual preset strip using either the drop down list menu or the tall arrow buttons to each side of the effect icon window.



Triggers:

Trigger settings are used to start / stop visual presets and control their intensity in the currently selected patch. There are three possible triggers for each visual preset:

KEY

The keyboard key used to trigger this visual preset.
Use the "Learn" button to change the key assignment.

DMX

As an information, the panel displays the DMX trigger channel for this visual preset.
The trigger channels can be configured in the "Show Settings" dialog.

MIDI

As an information, the panel displays both MIDI trigger note and controller.
Those can be configured in the "Show Settings" dialog.

Position Parameters

Within each Visual Preset you can define a comprehensive set of position parameters. These parameters can be defined for each visual preset but can also be saved (using “Save to New”) in order to recall them for different preset visuals at a later stage.

Note:

The “Save to New” function can also be thought of as storing a palette on a lighting console - for example if you have a set up using multiple screens or pixel mapping and want to define specific position co-ordinates to ensure that certain content is sent to a specific screen area or pixel mapped area you can position one piece of content and store this position preset and then apply the same position preset to other pieces of content.

If at a later stage you need to adjust the preset you can recall it, edit the data and then Save again. This will overwrite the previous preset and update this information in all presets that use it – the same as updating a position palette for a piece of automated lighting.

Presets

The application comes shipped with a set of common position presets.

Shapes

The position can be defined in three shape types by selecting the appropriate icon at the top of the position display: Flat Plane, 3D Cube or Sphere.



For each of these types, the following attributes can be adjusted:

- Pos X
Defines the top-left corner position of the image on the X axis – so for an image 800 pixels across with an 800 pixel wide output screen then a Pos X of 400 pixels places this image centrally to the output.
- Pos Y
Defines the top-left corner position of the image on the Y axis – so for an image 600 pixels high with an 600 pixel high output screen then a Pos Y off 300 pixels places this image centrally to the output.
- Pos Z
Expressed as a percentage the Z position moves the visual on a 3D plane – at 50% is the default and the middle of the plane. Increasing this percentage moves the image towards the viewer (zoom in) and decreasing moves it away from the viewer (zoom out).
- Width & Height
The maximum width and height of the visual content is the same as the maximum screen size of output – so if you are working with an 800x600 pixel screen you cannot have an image size larger than this.
- Rot X
Rotation X
- Rot Y
Rotation Y
- Rot Z
Rotation Z

Auto Rotate

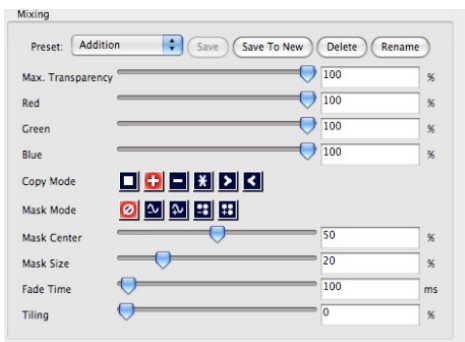
If you want the shape to rotate automatically without using a controller that changes value continuously, you must use the auto rotate function; it will change the behavior of the parameter to control the rotation speed.

The video output frame rate of a computer can go up to 60 frames per second and most consoles will not send that many controller values per second, so you will have a smoother result when using auto rotate.

Mixing Parameters

The mixing parameters allow you to configure the way in which the visual preset interacts with other active visual presets (this can also be described as how the output is composed).

There are a number of standard presets for this but you can also create new presets (Save to new) to suit your needs.



Max. Transparency

This defines the maximum level of the preset visual and is the same as creating a “top set” on a lighting console.

For example if you set the max. transparency to 80% then even if you fade the visual in to the top of it's fader (full) you will still be able to see through it to the layer below.

Color Levels (Red/Green/Blue):

The three color sliders allow you to adjust the amount of each color to be represented in the image. With all sliders at full (100%) then it is possible to achieve a white output. Once you reduce any of these sliders then you limit the color tone of the image – this can be very useful in adjusting clips to suit a particular color scheme or mood. It can also be helpful when creating visuals for projection onto colored surfaces where adjusting the color balance can help to ensure the original image is best represented against a tinted background.

Copy Mode

The copy mode defines the basic composition between the current layer and previous layers. MediaMaster supports the following options:



- **Replace:** In this mode, the pixels of the Visual Preset are written on top of the previous active layers. This is the default mode.
- **Addition:** In this mode, the pixel values of the current layer are added to the ones of the previous layers. This means that “dark” pixels in the current layer image won't alter the pixels that are underneath while “light” pixel will saturate the image underneath.
- **Subtraction:** In this mode, the pixel values of the current layer are subtracted from the pixel value in the underlying layers. Dark pixel from the current layer won't alter the pixel of the layers underneath while light pixel will darken them.

- **Multiplication:** In this mode, the pixels from the current layer will be multiplied by the pixels of the underlying layers. For a pixel to appear bright in the output, the equivalent pixel of the current layer and the underlying layer needs to be bright. If any of the layers has a dark pixel, the result will be dark.
- **Minimum:** This mode takes the pixel that is the darkest between the current layer and the layer underneath.
- **Maximum:** This mode takes the pixel that is the brightest between the current layer and the layer underneath.

Mask Mode – Chroma / Luminance Key

There are 5 basic mask modes for content. These affects how the content interacts with other running content.



Keying is a technique where some pixels are made transparent depending on their characteristics. Creating a Key is simply defining this interaction depending on the color or brightness of a pixel.

Chrominance Keying (or Chromakey) – ‘removes’ pixels based on their colors – for example the “blue screen” technique. Luminance Keying – ‘removes’ pixels based on their brightness level.

The masking mode switches allow you to select, from left to right:

- no keying
- luminance keying (band reject)
- luminance keying (band pass)
- chrominance keying (band reject)
- chrominance keying (band pass)

Band reject means that the selected luminance/color band will disappear while band pass will let the selection through.

Mask Centre

The center of the mask defines mid point tolerance of the mixing mode – varying this amount will change the amount of pixels that can be seen based on the type of mask used.

Mask Size

This defines the range of the mask algorithm – generally speaking the higher the mask size the more pixels can be seen from the layers underneath.

Fade Time

This function allows you to predefine the fade time for the Visual Preset when activated. The default fade time is 0 milliseconds (ms). When a new fade time is set which can be anywhere between 0 and 10,000 milliseconds (0-10seconds) The fade down timing is also taken from this parameter setting.

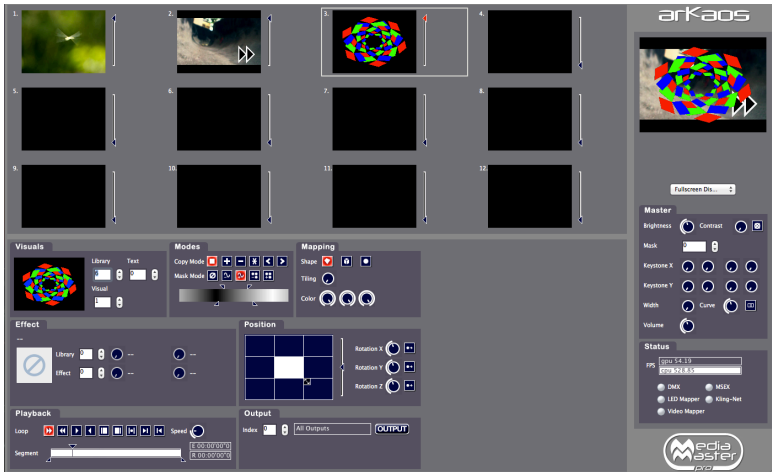
The fade time is set as a complete fade from 0 – 100%, if you choose to fade the layer from 0-50% it will take half of the preset fade time.

Tiling

The Tiling Function allows you to tile the output of that visual preset. At 0% the visual preset takes up the whole screen – as you increase the percentage the visual preset is tiled numerous times to fill the screen area with each tile presented at the same aspect ratio as the full screen output.

Using the software – Fixture Mode

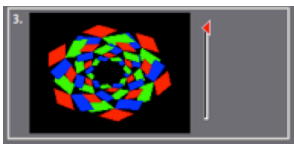
The main window



The Fixture Mode interface of the software has been laid out to provide a maximum number of information in a single window. Although the software has been conceived primarily to be used with DMX control, all functionalities are also available through the software interface.

The main window is organized around three main areas:

Previews area



The top left part of the main window shows the visuals selected on each of the 12 layers. We refer to those as the "layer preview". Next to each layer preview is a vertical slider that shows the mixing level (or transparency, or dimmer) of the layer.

If the level is set to zero, no output is shown. As you drag the mixing slider up, the layer will become brighter and the layer underneath will disappear.

Master output area

The Master Output is the same as in Simple Mode, it is detailed at page 21.

Status Indicators

The Status Indicators are the same as in Simple Mode, they are described at page 22.

Layer parameter area

Under the layer previews, you find the layer parameter area. This area displays all the settings for the 'current' layer. The current layer is the one whose mixing slider is red, as show in the picture above. To select another layer, either click in its preview window or on its mixing slider.

The settings of the current layer reflect all the control parameters accessible for that layer and will follow any DMX control sent from the console.

The parameters are grouped in relevant sections for easier reading:

Visuals



This zone shows the visual currently selected on the layer. Visuals are organized in libraries for easier access. There are 256 libraries each containing up to 255 visuals (one visual slot is reserved as a blank image).

Some libraries are also reserved for special usage (flash texts, acquisitions input and masking) but most of them are user configurable through the visual library management dialog.

To manually change the visual selected on the current layer, simply change the values under "Library" and "Visual". The layer preview should show you the visual running. If it doesn't, make sure the mixing slider for the layer is not set to zero.

MediaMaster comes with some pre-installed visuals. To set up your own set of visuals, refer to the "Library Management" section on page 38 in this document.

The value under "Texts" lets you chose from the 255 different texts strings to use with the Flash Texts included with MediaMaster. Flash Texts are Flash animations created with a special text statement that is dynamically replaced by the text string you select here. For more information on the Text Library, please refer to page 43 in this document.

Effects



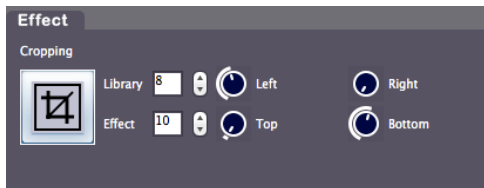
This zone displays the effect setting for the current layer. Effects are also organized in libraries for easier grouping. Each effect can have up to four parameters that are displayed on the right side of the panel.

Selecting an effect is done by modifying the values into the "Library" / "Effect" fields, then use the rotary button to modify the effect parameters. The range of effect available is depending on the fixture selected. For more information on effects availability, refer to the "Fixtures DMX Chart – Pro Version" section on page 81.

Important note:

For performance reasons, effects are by default NOT applied on the preview of the layer. You will see the full composition, including effects on the master preview but not on the individual layer preview windows. If you have a very powerful graphics card, you can change this setting, in the Preference Dialog. Refer to the "Preferences Dialog" section at page 44 for more information.

Effects can do many things like alter color or deform a visual but some can also be useful to apply more “subtle” modifications to your visuals when you can’t alter them and re-encode them.



For example the cropping effect can be particularly useful to get rid of unwanted content in the frame, when doing live camera acquisition. For that purpose we have made available four pre-set cropping settings in Effect Library 3 (Effects 32/33/34/35) and one fully parametric in Effect Library 8 (Effect 10).

Playback



These are the controls affecting the way your visuals (mainly videos) are played.

“Loop” controls how the video plays and loops. The available settings are, in order:

- Forward looping
- Backward looping
- Single shot forward (the video is played once then stops)
- Single shot backward (the video is played once then stops)
- Display first frame (useful when setting the segment start)
- Display last frame (useful when setting the segment end)
- Ping-pong (the movie plays back and forth)
- Single shot forward and freeze (the video is played once then stops on its last frame)
- Single shot backward and freeze (the video is played once then stops on its last frame)

Next to the loop setting is the movie speed control. The movie speed rotary control allows to speed-up or slow down the movie playback. If set to zero, the movie will stop (freeze frame).

Under the loop setting is the “Segment” zone, that’s where you define the portion of the movie you wish to play by selecting the first and the last frame.

When setting the first and last frame, it is recommended to use the “Display first/last frame” playback mode described above so that the frame you are adjusting is continuously displayed in the preview.

Finally you will find two clocks running underneath the speed button. The first one displays the time elapsed since the visual has started, while the second one the playback time remaining until the end of the visual.

Composition Modes

The “Modes” define how the current layer will be ‘composed’ with the previous layer.



“Copy Mode” is the basic composition between the current layer and previous layers. MediaMaster supports the following options:

- Copy: In this mode, the layer’s pixels are written on top of the previous layers. This is the default mode. The slider next to the layer preview acts as a transparency control for the layer.

- **Addition:** In this mode, the pixel values of the current layer are added to the ones of the previous layers. This means that “dark” pixels in the current layer image won’t alter the pixels that are underneath while “light” pixel will saturate the image underneath.
- **Subtraction:** In this mode, the pixel values of the current layer are subtracted from the pixel value in the underlying layers. Dark pixel from the current layer won’t alter the pixel of the layers underneath while light pixel will darken them.
- **Multiplication:** In this mode, the pixels from the current layer will be multiplied by the pixels of the underlying layers. For a pixel to appear bright in the output, the equivalent pixel of the current layer and the underlying layer needs to be bright. If any of the layers has a dark pixel, the result will be dark.
- **Minimum:** This mode takes the pixel that is the darkest between the current layer and the layer underneath
- **Maximum:** This mode takes the pixel that is the brightest between the current layer and the layer underneath.

“**Mask Mode**” lets you setup up luminance and chrominance keying. Keying is a technique where some pixels are made transparent depending on some of their characteristics.

Luminance keying ‘removes’ pixels based on their brightness level while chrominance keying removes pixels based on their colors. A typical example of chrominance keying is the ‘blue screen’ technique.

The Mask Mode switches let you select, from left to right:

- no keying
- luminance keying (band reject)
- luminance keying (band pass)
- chrominance keying (band reject)
- chrominance keying (band pass)

Band reject means that the selected luminance/color band will disappear while band pass will let the selection through.

When luminance or chrominance keying is selected, a new widget will show up allowing selecting which part of the spectrum/brightness level should be affected:



The widget has four points that can be moved. These points are always centered in the middle of the widget so, to define the center of the color/brightness scale, you need to click and drag inside the scale. The two top points will define the zone of the scale that is selected (filter width). In between those points, the color/brightness will be totally passed or rejected (depending on the mode selected).

The lower points allow to set the smoothness at which pixel will appear / disappear (filter slope). If the lower points too are close to the top points, the masking will be very abrupt and some artifacts might show up.

Mapping

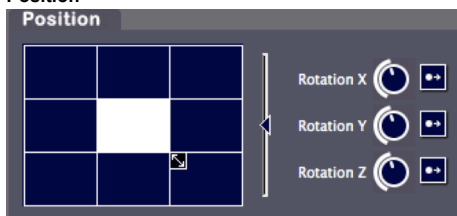


The mapping setting allows projecting the visual and the effect on a 3D object. You can choose between a plane (this is the default mode), a cube and a sphere. When mapped, the video becomes a texture projected on the object.

At this stage, you can also change the tiling (number of times the visual is repeated on the object) and adjust the color balance of the result. The color balance is a subtracting process in the RGB space.

When lowering the 'R' value, you remove some red from the original colors. The color balance is kept unchanged when all of the rotary buttons are set to the maximum value.

Position



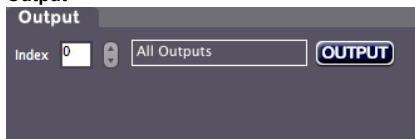
The position panel allows you to control the position of the layer's output in a 2D or 3D space.

The square position widget allows setting up both the layer's position and size.

You can use this feature if you want display the layer output in the top left corner for example.

The slider next to it allows zooming in/out by specifying a Z (depth) offset. The three rotaries on the right side specify 3 rotation angles in the 3D space. Note that next to each rotary is a switch that allows the rotary to act either as an absolute angle setting or as a rotation speed

Output



The output panel let you select the outputs on which you want to display the layer.

From here, you can also open the "Output management" dialog (cf. "Output management" on page 70)

Media Types

Video

MediaMaster can playback a large number of video files through its native decoder, which is based on FFMPEG. The compression codec that we have found to give the best overall performances is MPEG-2.

This said, the software has been designed to make best use of your computer system and therefore should be able to play files encoded with most of the video codecs you have installed on your system. However by using a codec that is not native to MediaMaster you will increase the drain on your system resources and therefore you may encounter performance issues depending on your hardware profile.

With a MultiCore CPU, MediaMaster will use all CPU's when necessary, so the basic rule if you intend to play high definition content would be to have a system with at least the same number of cores as the number of high definition layers you want to play.

Note:

The compression codec, file size and type can have an effect on the reliability and quality of playback depending on your hardware configuration and show type. For example a show which uses 8 layers of HD video simultaneously will require much more processing power than one using low resolution video or stills to drive LED pixel mapping.

Alpha source support



If you import images or videos with an alpha channel (for example as a result of green keying), the transparency of the media will be used in the mixing.

When setting the preview style to "Full" (cf. "Performances Tab" at page 52) you will see the transparent areas in the layer preview, no matter if it comes from the original media or from applying luminance / chrominance inside the software.

Images

MediaMaster will accept the following file types into the library for still images:

JPG, BMP, GIF and PNG

You can import images that are bigger than the output resolution but for performance reason you images should never be bigger than the output resolution used. Only when using specific effects you may need to import images that are bigger than the resolution used in MediaMaster.

Audio

When an audio loops has a video track it will be played. For performance reason you may not want to play the audio, this can be done by going in the preferences in the Audio tab; there you can select the output devices and set it to "No Audio".

The best synchronization between audio and video is achieve by selecting "System Clock" in the Display preference panel under "Timing Reference"

Generators

Those are music visualizers that react to the sound of the audio input of your system. Some generators are GPU accelerated effects while others are SWF Flash files.

You can create custom generators with Flash, the ArKaos Blog has tutorial articles to get you started.

Effects

Under Mac OS X, MediaMaster allows to use Quartz Composer .qtz files directly, both as sources and effects. The compositions are rendered natively through the fastest available interface.

You can import .qtz files as sources simply by adding them to your media library, just like you import any standard movie.

Adding Quartz compositions as effects is a little bit trickier because it involves modifying the default fixture to be able to control your effects. It is however possible to achieve this and if you would like to go that way, please contact us and we'll help you.

Cameras / External Sources

MediaMaster will accept as source any live input that is connected to your computer, as long as it is natively recognized by your system (i.e. without the need to install proprietary drivers or software).

Your acquisition device must be compatible with QuickTime under Mac OS X and Direct X under Windows.

Libraries

The following settings and preferences are accessed from the “Edit” menu at the top of the software window in Windows OS or on the application menu bar at the top of the screen in Mac OS.

Library Management

Overview and Library Concept

MediaMaster uses a library system of folders and files to help organize your content and allow for quick selection of media as required. The Library is made up of 256 folders, each of which can contain up to 256 media clips or visual effects.

No matter what library folder you are in, the visual number 0 is blank – meaning that if you select 0 then no visual is displayed.

Root Folder

At first launch, MediaMaster will ask you to define the root folder for you media library. When you do that, MediaMaster will automatically generate a series of specific folders for pre-installed media content and effects.

Media Folders and Naming Conventions

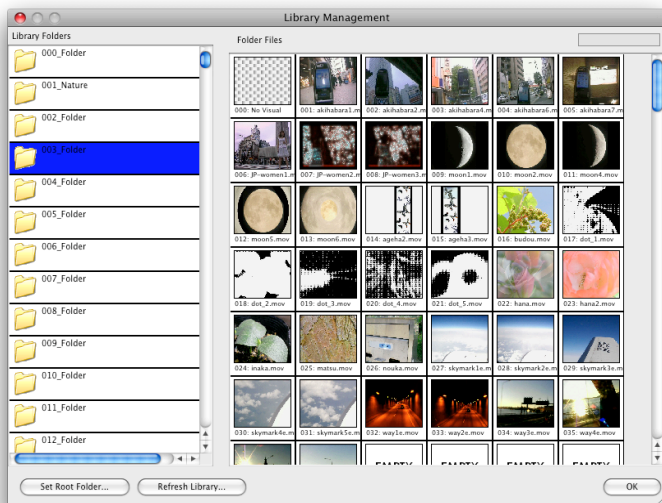
Within this root folder each media folder needs to be named with a three digit number (001 – 255) followed by an underscore and then the name of the folder. You can name the folder as you wish but spaces are not allowed. For example if you wanted folder 1 to be called assorted clouds the naming convention would be “001_assorted_clouds”

Note:

If the name of the folder or files doesn't match this format then it will simply be ignored by MediaMaster.

You can also change the name of the folder within the Library Management window by right clicking on the folder and selecting “Rename...” from the pop up menu.

The library window looks like this:



The left pane of the window shows the 256 library folders with the selected folder highlighted in blue. You can scroll through the list and select any of the folders by clicking on its icon.

The right pane displays the thumbnails of the visuals contained within the selected folder. There are 255 visuals per folder (the first one is always considered as an empty slot) and where content doesn't exist then the thumbnail will display "empty". You can scroll through the content using the scroll bar on the right side of the window.

If you put the mouse pointer over an existing visual, you will see its full filename as well as its resolution.

All regular content folders are indicated by a folder icon, and display the library number as well as its name.

You can add, remove, and duplicate your content inside those folders as you wish either using the computers own filing system or through the library management window in MediaMaster.



001_Nature

The default libraries that are used for specific purposes are at the top end of the library structure (folders 240 onwards) and have different icons relating to their content and purpose.



240_GENERATORS

Folder 240 is reserved for Generators. Generators are modules that react to the audio input to generate visuals in much the same way as the visualizer is employed in iTunes or Windows Media Player.

These generators are pixel / particle based and can be great for integration with a live DJ or music set. The sound input from your computer is used to feed these – be it microphone (default) or line input and this is selected in the main software preferences.

AF 242_AudioFlashFolder1

Folder 242 is reserved for Audio Reactive Flash animations. These are Flash animations that reacts to the audio input (with ActionScript) in the same way as the pixel / particle generators in folder 240 but with flash (vector) graphics. You can load your own flash generators into this folder in addition to the supplied files.

R 241_RESERVED

Folders 241, and 243 to 249 are reserved for future development and cannot be used. This is to make sure that future developments will not clash with existing customer configurations.


TXT 250_TextFolder1

Folders from 250 to 253 are reserved for Flash Text animations. Flash texts are special visuals in which you can dynamically change the text string. The amount of text string displayed depends on the visual so you may find that some longer text strings do not fully show.

Selection of the text string is based on the pre-defined text you create in the text library.

Although you could place the flash text in any other media library, we thought it would be more convenient to group them in a special location making it easier to browse.

The default library contains a good set of example files, the folder 250 provides improved Flash Text animations where the text area is adjusted depending on the string length while the folder 251 provides lots of useful text animations.

 254_CAMERAS

This library is a virtual folder (in the sense that it doesn't refer to anything on the file system) that will list all available video inputs found on the machine when the software loads.

Video input is seen here in a very broad sense; it can be an acquisition board, a USB web cam, a FireWire cam or any other video inputs seen be the system.

Note:

The number of live video inputs is limited only by your computer system, so by using multiple USB video inputs such as webcams you can arrange a large number of video feeds all of which can be triggered or mixed within the software.

The live video input can also use the same effects processing as the standard media files.

 255_Masks

The last library is the 'mask' library. Its content is used to provide the master output mask as described earlier in the 'master output area'. Masks are more likely to be black and white images as they are multiplied with the image resulting of the composition of all layers. With that respect, the mask acts as a transparency film where a white is fully transparent and a black pixel is fully opaque.

Building your libraries

Managing the content is fairly easy. You can add, remove and rename medias directly with the user interface.

In order to try and achieve the fastest playback and quickest response, MediaMaster preloads all the media content contained within the library at startup until it reaches available memory (RAM) limit. At this point, it starts unloading movies. Starting a movie that has been

unloaded (to free memory) will take a little more time depending on the movie format (check recommended movie formats in 'Movie Compression', further in this document).

If you need to work on several shows, it is probably better to build several dedicated libraries rather than filling one with all the content. The application will start faster and there is less chance of movies being unloaded due to ram requirements.

If you are continually running large shows with a lot of media – especially if the media is high resolution then ensuring you have the maximum amount of RAM installed in your computer will help the performance of the software.

Adding visuals to the library

To add content to any of the folders in the library, you have several options:

A) Drag and drop files from the explorer/finder window on the library folder where you want them to be. By doing so, the files you drag and drop will be copied in the first empty slots available in the folder.

B) Drag and drop files to a specific slot in the folder content. This allows you to specifically set the starting slot of the file or to overwrite existing files. If you drop the files to an empty slot, the files will be set in all empty slots starting with the one where files were dropped. If you drop the file to a slot containing already a visual, you will be asked if you want to overwrite the existing file(s) or start at the first empty slot after the one you dropped the files on.

C) Right click on a slot and select 'Import/Replace Visual...' from the context menu to import a single file to a give location.

When you delete or overwrite files in the media library, the files will be physically **erased** from the hard drive. Make sure you always have a copy of your original files somewhere else. Also, if you drag files from the explorer to the media library, the files will be **copied** from their original location to the media library, preserving the original files.

Removing visuals from the library

To delete content from the library, right-click/Cmd-click a slot with the visual you would like to delete and select 'Remove Visual...' from the context menu. *Again, be warned that removing the visual will physically erase it from the hard drive.*

Moving visuals in the library

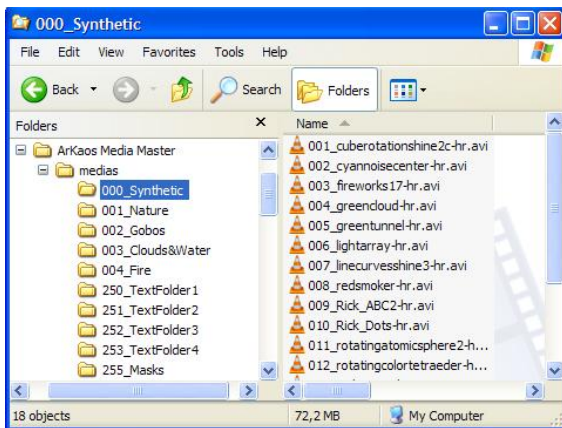
To move a visual inside the library, simply drag and drop it within the folder. To move the visual to another library folder, simply drag and drop it from its slot to one of the folders in the left pane. The visual will be assigned to the first free slot in the target folder.

Renaming folders

To rename a folder, simply right-click / CTRL + click the folder and select 'Rename...' from the context menu.

File system

The library structure is reflected on the hard drive where all files for the library are stored. The whole library is contained within a special folder called the 'root folder'. If you look at the installation folders, you will see the default root folder called media.



Inside the root folder is a collection of folders each starting with a 3-digit number followed by an underscore and a name. Each folder following this convention represents a library folder (as seen in the left pane of the media management dialog) and the 3-digit number represents the id of the folder. Because of this, you can't have folders without the 3 digit number scheme. Neither is it possible to have two folders starting with the same three numbers (one of them will be ignored).

Inside each folder is the collection of media that the library folder holds. The media also follow the 3-digit conventions with the digits representing the visual number inside the library. Note that for visuals the digit starts at 001_ since visual 0 is always considered as being empty.

If you wish, you can organize your libraries by modifying the files on your hard drive directly. However, the changes you do there are not updated automatically in the software while it's running. If you want to software to take into account changes done on the file system, go in the media management dialog and click on the 'refresh library' button at the bottom of the window.

Changing the root folder

As seen earlier, MediaMaster loads all the visuals in the library at startup to ensure a smooth startup of medias when triggered. Because of that, and depending on the capacity of your hardware, having a huge library can have a very big impact on startup time and memory usage.

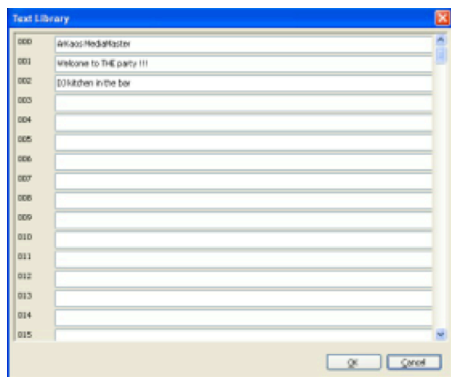
If you are doing several shows using MediaMaster, we recommend building several library structures so you don't hog the memory with files you won't need. To switch between different libraries, you simply need to specify a new 'root folder' using the button at the bottom of the media management dialog.

When specifying a new root folder, the current library content will be unloaded and the content in the new root folder will be loaded instead.

Note:

For the library to be properly loaded, it is mandatory that the folders and files located under the root folder follow the 3 digits convention as explained in the previous paragraph. If you don't see a folder or file in the library, it is most likely you didn't follow the proper file naming.

Text Library



The text library is a dialog used to enter text that can later be combined with special media files called 'flash texts'. These medias are by default present in the library numbers 250 (improved animations), 251 (simple animations) and 252 (audio reactive animations).

When selecting one of these media, you can use the text parameter of the layer to change the displayed text by one of the strings defined in the text library.

The content of the text library can be edited using a special dialog that can be recalled by selecting the menu Edit > Text management or, alternatively, by pressing CTRL+T / Cmd+T.

The dialog lists the 255 text entries of the library that can be edited by simply replacing the text item next to the item number.

When pressing 'OK' in the dialog, the text library will be updated and the new text item can be selected.

Preferences Dialog

The Preferences dialog is where you configure all the main user options in MediaMaster. It is organized with a series of header tabs and clicking on each of these will display the relevant information.

Application Tab (MediaMaster Pro only)

This is where you can switch the software interface to either Simple Mode or Fixture Mode (read "Control Concepts" at page 12), you will have to quit and restart the software for the changes to take effect.

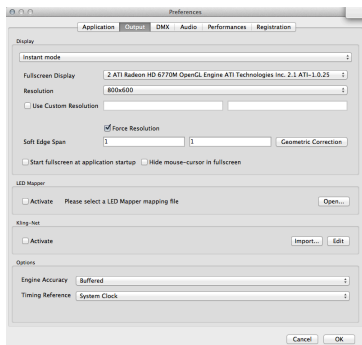
Output Tab

The Output tab contains the settings related to the software's outputs, which can be Display outputs, LED Mapper output and Kling-Net output.

In the Display panel, you can choose between two different modes:

- Using the 'Instant mode', you can directly output visuals full screen to a set of similar displays using a single resolution for all. MediaMaster considers this set as a single output.
- In the 'Video Mapper mode', you will define a set of surfaces on the different displays that are connected to your computer using the Video Mapper application. In this mode, each display can have its own resolution, and each surface created on a display is considered as a separate output by MediaMaster, meaning that each surface can display a different set of visuals.

Instant mode



The Display panel contains the setup related to the full screen or output mode of the software. As previously stated MediaMaster is designed to be used with at least a two display set-up where displays starting from the 2nd carry the full screen output from the software.

As such the first video output is used to display the main interface containing all the previews and parameters while the second video output is used to send the full screen image to a projection hardware.

This dialog is used to specify the characteristics of the adapter used for the full screen.

Full screen Display

This specifies on which adapter the full screen will be displayed. Normally the select box should contain at least two entries. If it does not, it means the system doesn't think you have two-output setup. To correct this, go into the system properties and make sure the display settings are such as you have two displays recognized by the system. Make also sure your displays are setup to provide dual-mode and not cloning. For more discussions on screen setup, see 'Widescreen & multiscreen presentation' at page.

Resolution

This setting specifies the resolution at which the graphical engine should run. The lower it is, the faster the engine can go and the better the frame rate gets but the lower the quality of the result is. The list of resolutions shown in the drop down menu is dependent on the output device – for example if you are connected to a projector with a maximum resolution of 1024x768 pixels then this will be the maximum you can configure in this box.

Use Custom Resolution: use this option if you want to specify manually the internal engine speed to a resolution that is not a display resolution. In the case this option is selected, the 'Force Resolution' option will automatically be disabled.

Force Resolution: if this option is enabled (default) the software will resize the display output to the engine resolution when going to full screen. Unless specific case, it is often better and more efficient to leave it on.

- When "Force Resolution" is checked, the output will be displayed full screen. This mode guaranties the best performances and screen synchronization.
- When "Force Resolution" is unchecked, the output will be displayed within a top-left aligned window.

Multi-Display arrangement (Windows only)

It is possible to display the output of MediaMaster across all the displays connected to a graphic card without using the "spanning" feature that is only available under windows XP.

It can be used to avoid going through Matrox DualHead2Go or TrippleHead2Go interfaces if your video card has 2, 3 or more outputs.

This feature is available under Windows XP, Vista and Seven.

The "Resolution" pop-up menu now proposes multiple-display setups (i.e. "1024x768x2" for a 2048x768 horizontal setup or 1024x1536 vertical setup) in addition to the standard single-display resolutions.

The "Multi-Display Arrangement" is there for you to choose the way you want to arrange your monitors. MediaMaster uses this information in combination with the actual Windows display arrangement to determine a correct output.

Note:

Under Mac OS X it is also possible to span the output of MediaMaster over several displays by simply select the display on the top-left and use a custom resolution that will cover the multi-screen setup area.

Soft Edge Span

This option allows you to specify how many projectors you are using to map the whole screen vertically and horizontally. Unless you are using the soft edging function of the software, you should leave this option to 1 for both fields.

In the soft edge span the first box is the number of horizontal screens and the second box is the number of vertical screens – so for a triple screen system in a horizontal configuration you would insert 3 and then 1 into the number fields.

Please refer to "Soft-Edge" at page 61 for more explanations about setting up and calibrating Soft-Edge span.

Geometric correction & Soft-Edge per output (MediaMaster Pro)

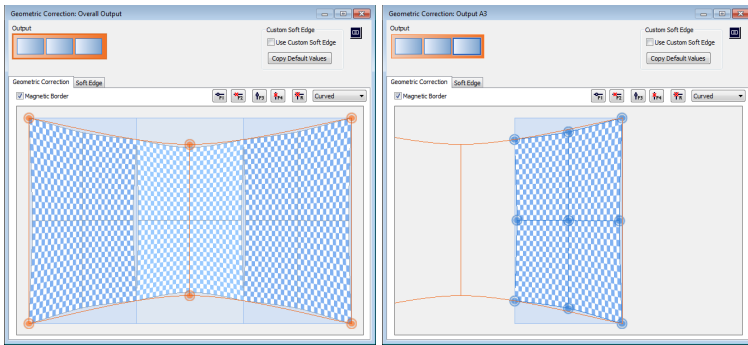
It is possible to warp the output per screen and adapt the soft edge on each side of an output.

These settings can be accessed via the "Geometric Correction" button near the soft edge span dimensions on the Display tab of the preferences dialog in MediaMaster Pro.

The number and arrangement of the outputs is determined by the soft edge span dimensions.

Geometric correction

Thanks to the Geometric correction you can correct output deformations via a correction grid.



The dialog is divided in three main zones: the screen arrangement, the toolbar and the correction grid. Via the clickable screen output arrangement, at the top left of the dialog, it is possible to switch between the correction grids of the different screen outputs.

A normal output is represented by a blue rectangle and the overall correction grid is represented by an orange rectangle. With this overall correction grid it is possible to apply a correction over all displays at once. This is especially useful if you are using multiple outputs to project on one curved screen.

From the drop-down list on the toolbar, you can choose from four different correction types, namely:

- **No Correction:** If you don't want to apply geometric correction to this screen. In this way MediaMaster knows that it can bypass the geometric correction process for this screen.
- **Linear:** A linearly interpolated grid for straight corrections.
- **Curved:** For smooth geometric corrections such as a curved screen.
- **Nurb:** A second method for smooth geometric corrections.

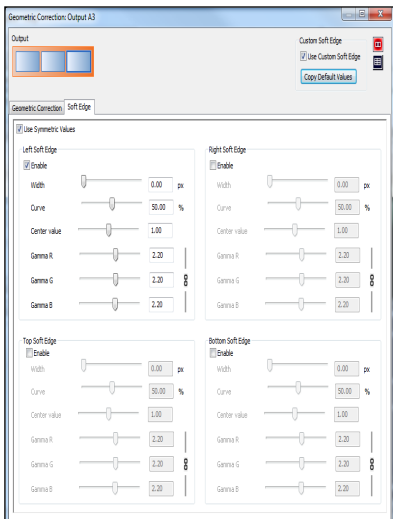
The correction grid is modified by moving each control points. The control points can be moved with the mouse or with the arrow keys for per pixel precision. Control points can be added with the appropriate buttons on the toolbar and via the keyboard shortcuts (F1-F4). The reset button resets the grid to its original state.

The magnetic border makes the screen border 'sticky', thus making it easier to correctly position a control point to the border of the screen.

The following keyboard / mouse shortcuts are defined for the geometric grid dialog:

Shortcut	Action
F1/F2	Add/Remove Horizontal Control Point
F3/F4	Add/Remove Vertical Control Point
R	Reset Control Points
M	Cycle Through Correction Modes
Arrow Keys	Move Control Points Per Pixel
CTRL + A	Select All Control Points
CTRL + Click	Select Multiple Control Points
TAB/TAB + SHIFT or +/-	Cycle Through Control Points
Double Click (Outside an Output)	Go To Overall Output
Double Click (Inside an Output)	Go To Selected Output
Scroll Wheel	Zoom View In/Out
Middle Mouse Button	Pan view

Soft Edge per Output



The custom soft edge lets you adapt the soft edge parameters per edge of an output.

You will find two controls at the top of the "Custom Soft Edge" panel: the check-box "Use Custom Soft Edge" and the button "Set Default Values".

Use the checkbox to tell MediaMaster to use the custom soft edge per output (if checked) or the standard overall soft edge (if not checked).

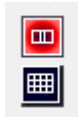
The "Set Default Values" button will copy the curve and fade curve parameters from the overall soft edge settings, plus the soft edge setup, to the custom soft edge settings so you can start from scratch.

Note that using the custom soft edge per output will disable the master fixture's soft edge.

In the Soft Edge tab, you can enable and control soft-edge for each output, first select the desired output from the representation above the tab then adjust any or all of the following options:

- **Use Symmetric Values:** replicates soft edge parameters adjustments done on one side of an output to the opposite side of the output next to it.
- **Width:** defines the overlap length in pixels.
- **Curve:** controls the shape of the blend curve (0% being linear).
- **Center Value:** controls the luminance in the center of the blend region.
- **Gamma R, Gamma G and Gamma B:** adjusts the blend curve separately for each color component. The three values can be linked together using the link symbol on the right.

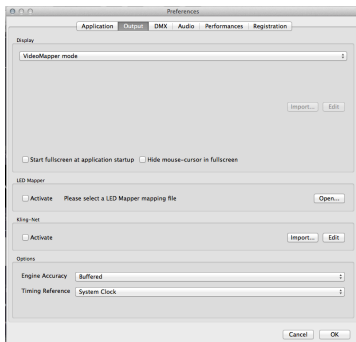
Test grid and pattern



MediaMaster provides several test patterns to help setting up soft-edge in various situations, as well as a grid that reflects the geometrical correction as setup on the corresponding output.

The two buttons at the top right of the output settings window will let you switch from test patterns to test grid.

Video Mapper mode (MediaMaster Pro)



In Video Mapper mode, the configuration of the displays is done in the external Video Mapper application.

Clicking on the "Import..." button will let you choose a Video Mapper file that you have previously created in the Video Mapper application.

Clicking on the "Edit" button open the selected mapping file in the Video Mapper so you can edit it.

Display options

- **Start Full screen at application start-up** – For most temporary or touring applications this is unlikely to be needed but for installations in venues where you want the system online as quickly as possible and the same output is being used every time, enabling this ensures that the output appears as soon as the software is loaded.
- **Hide mouse cursor in full screen** – Exactly as described: with this box selected the mouse will not be visible in full screen mode. This can be fine when you use the system entirely by external DMX or MIDI control but if you want to be able to edit in the main software window during a live show then leave this unchecked!

LED Mapper

The LED Output panel allows you to activate the LED Mapper output module of the software.

Activate: When enabled, it triggers the LED Mapper output module of the software. When activated, the video engine will be restarted and the LED Mapper broadcast will be started.

The only parameter is the mapping file to be used. By clicking on the "Open..." button a file browser window will open so you can browse to a LED Mapper mapping file you have previously created and saved in the LED Mapper application.

Kling-Net

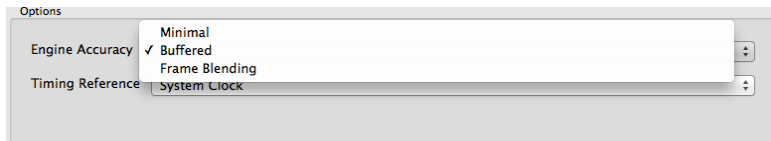
The Kling-Net panel allows you to activate the Kling-Net output module of the software.

Activate: When enabled, it triggers the Kling-Net output module of the software. When activated, the video engine will be restarted and the Kling-Net broadcast will be started.

Clicking on the "Import..." button will let you choose a Kling-Net mapping file you have previously created in the Kling-Net Mapper application. Clicking on the "Edit" button will launch the Kling-Net Mapper application and open the selected mapping file so you can edit it.

Engine Accuracy

There are three settings for the engine accuracy as shown below.



- **Minimal** is more suited for less powerful hardware.
- **Buffered** is the default mode and ensures frame pre-buffering to achieve display synchronization.
- **Frame Blending**: activates the Frame Blending.

Note:

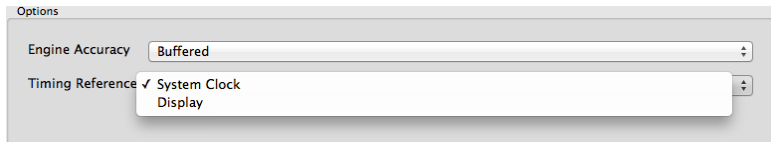
Frame Blending is a technique that allows the engine to interpolate between movie frames whenever it needs to. It's very useful when slowing down videos a lot, since instead of producing a steppy frame display, the engine will continuously mix from one frame to the other making the transition a lot smoother. It's also useful when you display movies that have a frame rate that is not 'coherent' with your output display.

For example, when using a 60hz display output, you should ideally use only 60/30 fps movies to avoid desynchronisation between the movie frame and when the monitor can display frames. MediaMaster won't prevent you to play a 25 fps movie, but you might end up with some jitter in the display. Activating Frame Blending will dramatically improve the output quality of the movie in this scenario.

Timing Reference

In order to get the smoothest display possible, MediaMaster defaults to using the main display output as timing reference. This ensures that frames are delivered in timely fashion, synchronized to the display's vertical blank.

However the timing of graphic cards is not always truly accurate: they might advertise 60Hz while actually running slightly over/under that frequency. In most cases this is not really an issue but if you need the movie playback to be perfectly in time (if you synchronize it with some external audio for example, or use movies with audio) you need to be able to use the more accurate time reference of the System clock instead. The selection of the time reference is done through the Combo box under the engine accuracy:



Choose "Display" for a smoother image when exact timing isn't mandatory or "System Clock" when the video playback speed is critical.

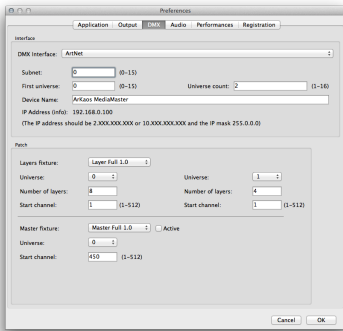
Note:

Display Time Reference privileges video smoothness over audio / video synchronization.

For the audio and video to properly synchronize, it is very important that the timing reference (in display preferences) is set to "System clock" as the inaccurate display frequency reported by the system might cause the audio to drift.

DMX Tab

The DMX tab gives all the information regarding the interface of DMX with MediaMaster, it allows patching layers and master fixtures on several DMX universes.

**Note:**

The DMX tab allows you to define the incoming DMX type – over ArtNet or USB – and the universe that you want MediaMaster to respond to.

In Simple mode, the channels of DMX that the software will respond to are defined in the "Show Settings" tab (read the related section 24) that can be accessed from the "Show" button in the main software window.

DMX Interface

Use this section to select which interface you would like to use for communicating with your console. MediaMaster supports the ArtNet protocol or a DMX USB widget. The latter one will only be displayed if it is properly detected by the system. If you have one and don't see it listed, refer to "Setting up DMX Control" at page 17.

If you use the ArtNet protocol, you have to select the subnet and universe you want MediaMaster to be listening to.

The IP address of the computer is also shown for reference. If you need to change the IP address to suit the range of your ArtNet installation, you have to do it from the Control Panel in Windows or the System preferences in Mac OS.

"Universe Count" represents the universes range you want to use for MediaMaster.

For example: with Universe set to 0 and Universe Count set to 3, you can use universe 0 for the first 8 Layer fixtures, universe 1 for the 4 remaining Layer fixtures and finally universe 2 for the Master fixture.

You can now decide the DMX address and universe of 2 groups of layers. You can also assign a DMX universe to the master fixture, this feature is available with ArtNet and GrandMA Net.

Patch (Fixture mode only)

- In this section you can select the fixture to use for the control of the layers (see the Fixture section for a full description of the various fixture modes supported by the software).
- You can also specify the number of layers to be slaved to DMX (if you need only two layers and want to spare DMX channels for other usage) and what is the base channel to use. You can also specify if you want the master fixture to be active and what is its base channel.

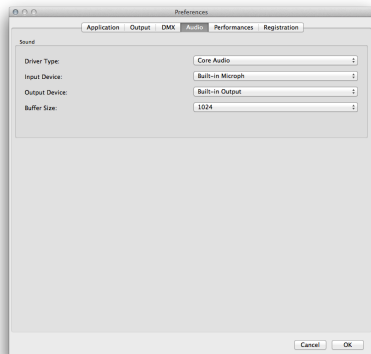
MIDI Tab (Simple mode only)

The MIDI tab allows you to select which MIDI devices will be enabled for use with the application.

Note:

All data from enabled MIDI devices are merged so no matter what interface it comes from, a “Note On” message on channel 1 will have the same effect.

Audio Tab



The Audio tab allows you to configure how audio is implemented in the software when media clips with audio are used.

The master output volume of MediaMaster can be controlled from the Master control panel on the main software window.

Driver Type

This where MediaMaster detects your system's audio and let you select which sound card you wish to use.

Input Device

MediaMaster will use the sound from the selected input device to feed audio-reactive Flash animations or Pixel Generators. The default Input Device is usually the on-board microphone of the system. When working in high volume environments you might want to configure it to a line-in feed – for example the audio feed from a DJ or if you wish to be even more specific even a single instrument such as a bass drum when working with live musicians.

You can set the audio input to NONE to deactivate it.

Output Device

Select the audio output device where MediaMaster will send the sound from any clip you play that has an audio track.

You can set the audio output to NONE to deactivate it. You can also find a global volume control for output on the master section of the main software window (see "Master output controls" at page 21) and this can be set to zero also.

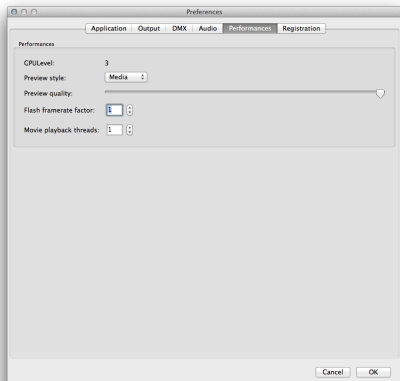
Buffer Size

Here you can define the size of the audio buffer in Kilobytes (K). The default setting is 1024k (or 1 megabyte) but this can be reduced to 256k or increased to 2048k as required. Bigger values will lead to more stable output but may cause latency with the video playback.

Hardware setup (Windows only)

This recalls the ASIO control panel for configuration under Windows OS.

Performances Tab



The Performances tab shows various settings allowing you to fine tune the performance of the software with respect to your hardware set-up.

The first field shows the GPU level of the machine as assessed by the MediaMaster software.. This is an indication of the power of your graphic card and ranges between 0 and 5. If your level is anywhere below 3, you might have some features and effects that are disabled as the graphic card doesn't support all of the software's features.

Although MediaMaster will run on machine with a GPU level of 0, we strongly recommend the use of a graphic card that provides at least a rating of 3 on this scale.

Preview style

This setting control the way layer previews are shown. Displaying layer preview involves quite a bit of processing and the style of the preview used can influence greatly the average frame rate of the software.

- **Off** – No preview is shown and as such all graphics processing power can be dedicated to the master preview and output windows.
- **Media** – The default is to show only the media running. This is useful since it allows you to quickly know which layer runs which visual. However, if your computer is not very powerful, you might want to disable the layer preview by selecting 'off'.
- **Full** – If have a powerful graphics card, you can try to have the layer preview displaying both the media and the effect applied on it by selecting 'full'. Be sure however to check the

impact on the frame rate as it involves retrieving a lot of information from the graphic card and this process can be quite slow.

Preview quality

This slider defines the quality of the master preview shown in the main software window. Lowering the master preview quality will speed up the processing and may increase the quality of the full screen output but will result in a pixelated preview.

If you set the preview quality to zero (all the way to the left) the master preview will be turned off.

Flash Frame Rate Factor

Generating Flash effects is a CPU intensive process. If you have a weak CPU then this setting allows you to divide the frame rate of generating flash content by a preset factor.

If you set the rate factor to 2 the software will render one flash frame for every two frames of output. This can lower CPU usage but at the cost of losing fluidity of the flash effect generated. However in this scenario changing the rate factor may help to achieve a constant frame rate on the software.

Movie playback threads

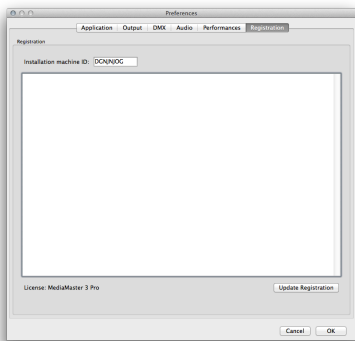
By default in MediaMaster, most of the movies are decoded in a separate thread. If your computer has enough processor cores, a thread is executed in a separate core on the system.

In case the file you want to playback is too heavy for a single core, you may want to dedicate several threads thus several cores to this task.

You can choose the number of threads you want to dedicate to a file playback task, depending on the number of cores on your system and the processing power that's required in order to play the file at full frame rate.

The maximum number of threads goes up to 8.

Registration Tab



The registration tab simply displays your Machine ID code and a text field, which contains your serial number if you have activated the software.

The Machine ID is generated by the software and can't be changed; it is displayed only for information purpose (you will need this information to obtain your serial number from the ArKaos web site or if you wish to contact ArKaos support about your license).

If you have received a different serial number for the same Machine ID code (i.e. you had a serial for MediaMaster Express and you now have a serial for MediaMaster Pro), you can use the "Update Registration" button after you have replaced the serial. You will have to restart the software.

Application Menus

File

The “File” menu is only available on a PC. It lets you access to the Preferences dialog and Quit the software. On a Mac, those menus are located in the “MediaMaster” menu.

Note:

To prevent any accidental exit, you can't exit the software when running in full screen mode.

Edit

- **Resync to DMX**
As we've seen earlier, even when you slave the server to the DMX console, you can still use the user interface to modify parameters of layers or the master controls. If you do so, the parameter will keep the modified value until this particular parameter is modified from the DMX (i.e. the DMX channel value for that parameter changes). If you wish all parameters to be re-synchronized automatically to the current DMX values, select this entry.
- **Library Management**
Brings the media library dialog as discussed in the 'Media Management' section earlier in this document.
- **Text Management**
Brings the text library dialog as discussed in the 'Text Library' section earlier in this document
- **Output Management**
Brings the Output dialog as discussed in the 'Output Management' section earlier in this document
- **Show Settings (Simple mode only)**
Brings the Show Settings dialog as discussed in the 'Show Settings' section earlier in this document

Display

- **Toggle full screen**
This turns on or off the full screen display output. If no external display is connected then the full screen display will be shown on the primary display – replacing the main software window.
- **Window / Minimize (CTRL+M / Cmd+M)**
This will minimize the main software display window allowing you to see the other windows on the desktop. To recall the window either click on the task bar (Windows) or on the minimized window icon on the dock (MAC OS).
- **Window / Zoom**
This will expand the window to fill the screen and is the same as clicking on the + icon on the top of the main software window in MAC OS or on the maximize icon in Windows.
- **Window / Bring All to Front**
This will bring the main software window to the front of any other open applications or windows on the desktop.
- **Help / Documentation**
Opens the PDF version of this document
- **Help / Release notes**
Opens the Release Notes for the current software version
- **Help / ArKaos Website**
Opens your default Web browser on the ArKaos Home page.
- **Help / About**
Opens the 'About' dialog

Wide-screen & Multi-screen presentation

Introduction

For the most common of MediaMaster setups, a computer with two video outputs is generally used: one output for the desktop monitor (to display the interface and control the software) and another output which receives the result of the visual mix. That second output is generally connected to a video projector, a large screen or a hardware video mixer.

Note:

It is important to not that for this set-up to be effective your computer must be able to drive two independent graphics output and “mirroring” needs to be turned off in your display preferences.



In this case, you will be using the single second output to send your final mix and, after having defined the adapter to use and its resolution, you are ready to go.

MediaMaster, however, offers custom output resolution possibilities. This allows creating multi-screen or wide screen setups controlled through a single computer running MediaMaster. In this chapter, we'll investigate those specific setups.

Wide screen or multi-screen setups require to output in a high resolution and therefore a recent / powerful graphic card is necessary; a setup including 2 screens each in 1024x768 will require MediaMaster to output in 2048x768, which will use a lot of CPU and GPU resources.

Definitions

Wide screen

A wide screen setup consists of one large visual mix spanning across several screens placed next to the other.

This is achieved by generating a single MediaMaster projection in a large resolution, which spans across several video adapters.

If you plan to use projectors as outputs devices, you can use the Soft-Edge option to seamless edge blending between the two projectors.



Multi-screen

The multi-screen setup is the same concept as the wide screen in the sense that it drives several adapters but in this case you end with different visual mixes displayed on each output.



The way it works is that you use the position capabilities of MediaMaster to assign layers to part of the screen, which is divided across the various adapters.

Case studies

In order to explain the different steps to setup MediaMaster to produce a wide screen or multi-screen projection with several displays, let's examine some common hardware configurations.

Case 1: Dual head graphic card

If you only have a dual head graphic card and would like to achieve multiple outputs, you will need to use both adapters and, since you have no more monitor available left, you will lose the display the interface. If you programmed your show in your DMX console and don't need visual feedback from the program, this is an option.

Case 2: Dual head graphic card + single head graphic card

Adding a supplementary graphic card to the setup described above will allow you to use it with your desktop monitor in order to display the MediaMaster interface and control the software while you use the dual head graphic card and its two outputs for the wide screen or multi-screen.

Note:

At this stage, this option is only available on PC. The Mac version does not support accessing more than one graphic adapter.

Case 3: Dual head graphic card + additional hardware

Using an external hardware such as the Matrox DualHead2Go, TripleHead2Go or Datapath x4 allows splitting one video output into two, three or four separate signals. (These adaptors are small external devices, which are USB powered and have a single DVI or VGA input and 2 or 3 outputs on DVI or VGA)

This system allows computers with a dual head graphic card to use one of the graphic card output for the software interface and its second output to send the visuals that will be split across two or three different screens. This very affordable solution will also fit perfectly with most modern laptops.

The Matrox Dual or Triple Cards do not provide additional graphics processing so the graphics card in the system needs to be capable of dealing with the larger screen resolutions offered with this solution.

Other possible combinations

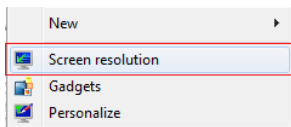
- Dual head graphic card with each output split in two with a DualHead2Go; you would have a 4 screens setup.
- Using the Matrox TripleHead2Go multi-display upgrade allows you to splitting a single display adapter across 3 different screens. This can lead to up to 6 screens if you are using a dedicated two-heads display adapter for the output (PC only).

Wide-screen or multi-screen projection – Setup

Earlier in this document, we've seen how to choose and setup a second monitor to display the MediaMaster visual mix. To do wide screen or multi-screen, the principle is the same in the sense that MediaMaster will continue to outputs one large visual mix, but the visual is going to span across the multiple heads of an adapter.

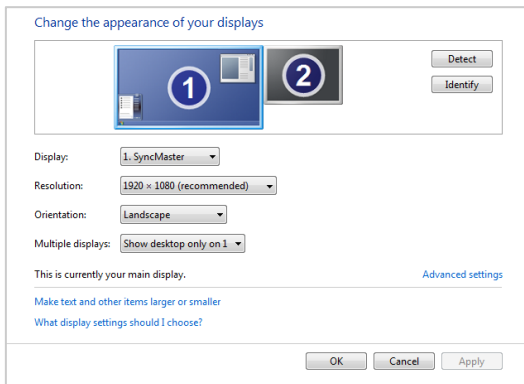
The way to execute the span across adapters is very different for Mac and PC's so we'll examine them separately.

Monitors setup under Windows Vista and Windows 7



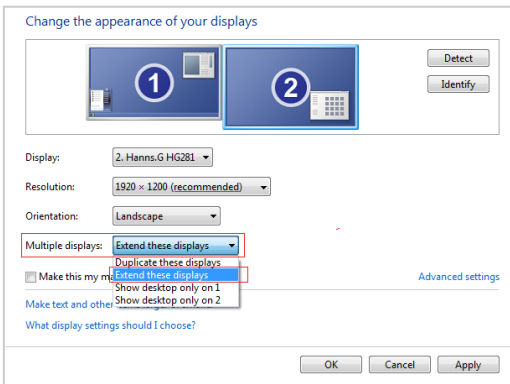
1. Right click on your desktop and select "Screen resolution" in the contextual menu

A window will open with the following options:



Make sure that there are at least 2 screens displayed under “Change the appearance of your display”. If not, click the “Detect” button. If you still don’t see 2 screens then windows doesn’t detect the second monitor connected to your computer.

2. Now click on the drop down menu next to “Multiple displays”. Then select “Extend these displays”. The second screen gets activated and now you can select the resolution for the screen. For the best image quality and correct aspect ratio, always select the native resolution of the screen.



Note:

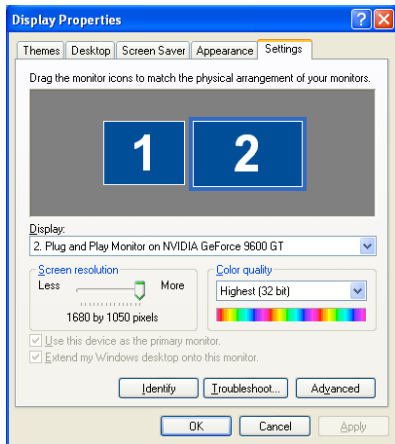
Windows 7 doesn't allow to make an horizontal or vertical span like explained here. The maximum number of screens that can be controlled at the same time in Windows 7 is: one for the GUI and three for the output, through a Matrox TripleHead2Go.

Monitors setup under Windows XP



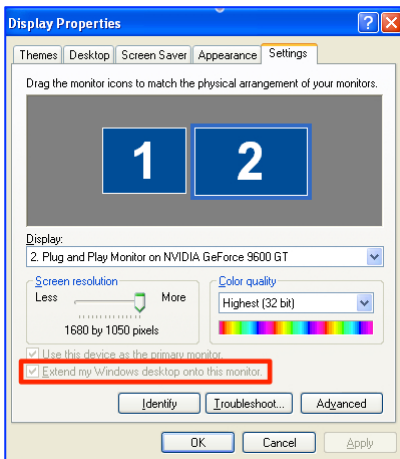
1. Right click on your desktop and select “Properties” in the contextual menu

A window will open with the following options:



Make sure that there are at least two screens displayed in the central gray area.

Click on the screen that is not yet active. This is displayed with a gray shine.



2. Now select “Extend my Windows desktop onto this monitor”.

The second screen gets activated and now you can select the resolution for the screen.

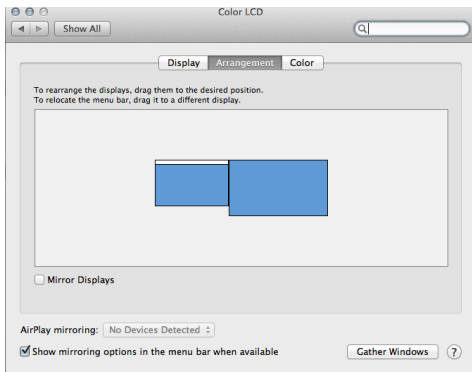
For the best image quality and correct aspect ratio, always select the native resolution of the screen.

Monitors setup under Mac OS X

1. From the Apple menu, open the System Preferences and select “Displays”, once in the Displays window, go to the tab “Arrangement”.

It is very important here to ensure that your monitors are represented in the same position as they are positioned physically; you may need to drag the monitors around with your mouse to place them correctly.

In this case, the primary monitor is placed to the left of the secondary monitor.



Note:

You will later need to specify manually the resolution corresponding to the sum of your two monitors. So make sure you take note of it at this stage. For example, if you have two monitors of resolution 1024x768 placed side by side, your total resolution will be 2048x768.

You can now close the System Preferences Displays window and launch MediaMaster.

2. In MediaMaster, go to the Preference Dialog and select the display tab. First, select as output monitor the monitor that is positioned at the top left of the full display. Then select the custom resolution setting and enter the resolution corresponding to the sum of the two monitors (2048x768 in our example).

3. Start the full screen and the window will be created across the two monitors.

To have it correctly spanned across your two monitors it is important that they have been positioned as they should at step 1 and that your MediaMaster resolution corresponds to the addition of the resolution from each of your two monitors.

Soft-Edge

To create a large screen by combining several video projectors it is important to be able to seamlessly blend the edges between each projection. This can be achieved through the use of the Soft-Edge option as it creates an overlapped area on the border of each screen with a fade on the edge that can be overlapped with the next image.

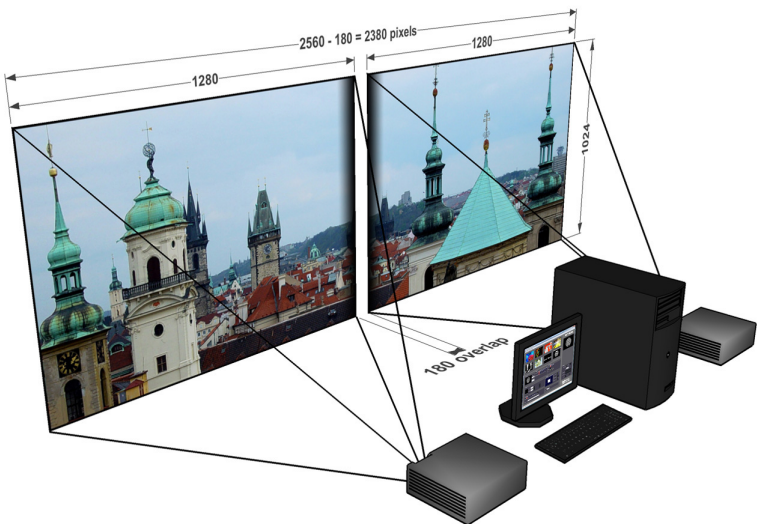
Note:

When setting up soft-edge, you have to be absolutely sure that all gamma/exposure of the graphic card & beamers are off. Otherwise you might have an imbalance between the two outputs and not be able to connect the projectors.

Here is an original image (a nice view of Prague's skyline):



And here's an example of what would be displayed with a two beamers setup:



The areas to blend are represented with a gradient in the middle of the projection, positioning the beamers so that these two areas are superposed will re-create the original picture without any visible separation in the middle of the projection.

Of course, it's highly recommended to use two identical projectors.

You enable the Soft-Edge by the number of projector used horizontally and vertically in the "Display Tab" of the Preferences Window:



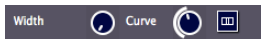
Once this has been setup, you can control the soft edging characteristics by changing the width and curve of the soft edge on the main interface:



The width of the overlapping area is defined between 2% and 50% of one screen size.

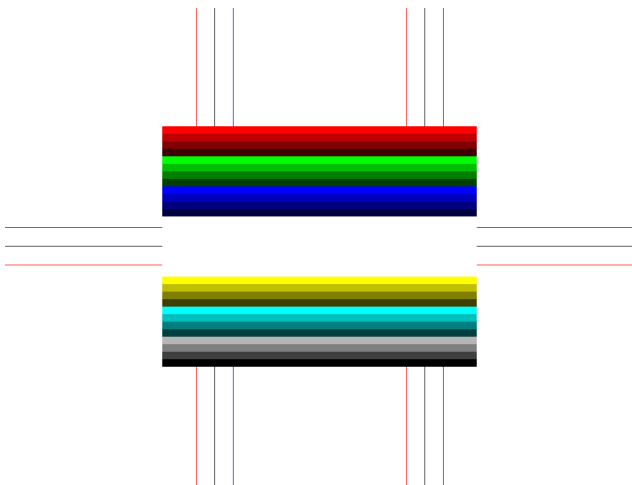
The curve factor defines the fade curve value allowing to fine-tune the luminosity of the overlapping area compared to the rest of the picture.

MediaMaster Pro and Express both have an integrated pattern generator that will help you to set up your screens. Since it is generated internally, it is pixel accurate no matter what resolution you chose to use.



You can activate it by pressing the button next to the soft-edge width and curve settings

You need to recreate the following pattern for the soft-edge to be correctly configured:



This test pattern replaces any output of visual presets from the software although these are still running in the ArKaos engine and will reappear when the test card is turned off.

The keystoneing settings can also be used with this test card.



If you click again on this button, you will see that there are multiple test patterns appearing. You can choose the one that fits best for your setup.

Calibration

Below are the common steps to setup and calibrate a wide screen with Soft-Edge in MediaMaster (provided that you have correctly setup your system and your graphics card driver parameters, as explained earlier in this document).

- Launch MediaMaster
- Setup the number of horizontal and vertical screens, and the soft-edge settings in the "Display tab" of the Preferences Window
- Import a picture appropriate for calibration and activate it
- Launch the full screen mode CTRL+F / Cmd +F in MediaMaster
(At this point, you should have the picture displayed on the two beamers with the soft-edge effect)
- Place the beamers correctly so that the edges that blend the seamless area are superposed
- Adjust the Curve parameter to obtain the desired luminosity on the overlapping area

Video Mapping

Concept

The ArKaos Video Mapper is an extension for MediaMaster Pro that allows easy mapping of video onto irregularly shaped surfaces and through multiple outputs. Designed to let you setup mapping projects in a very short time, it makes it incredibly simple to flow visuals around complex objects with just a few clicks.

Once you launch the extension, MediaMaster Pro will send the output from each layer to virtual "surfaces" that can be scaled, deformed, and assigned to any physical output. One output can display a full screen visual or a composition of several mapped visuals; output to a video projector and you can map the surfaces to any physical volume (like objects or buildings).

Hardware setup

ArKaos Video Mapper is designed to output video content on any display connected to the computer's graphical cards.

It is advised to connect all the displays to the computer before turning it on.

The Video Mapper application will detect the connected displays and let you configure their resolution and refresh frequency individually.

Mapping workflow overview

The Video Mapper application is designed to communicate with MediaMaster. The Video Mapper and MediaMaster can run at the same time on the same computer, so that you can edit the mapping directly with the video content running in MediaMaster.

The Video Mapper application is only needed for the edition the video mapping itself, and can be closed once the mapping setup is finished.

The typical workflow is:

1. Connect the displays to the graphical card then turn the computer on.
2. Launch MediaMaster application and switch to the "Video Mapper mode" in the Output preferences. You must restart the application in order for the mode to apply.
3. Launch Video Mapper application. You can also launch it using the "Edit" button in MediaMaster's Output preferences.
4. Create a mapping and test it directly with your video content while playing in MediaMaster (not available on Windows XP), or by using a test image.
5. Once the mapping is finished, simply close the Video Mapper application and MediaMaster will takeover the full screen displays.

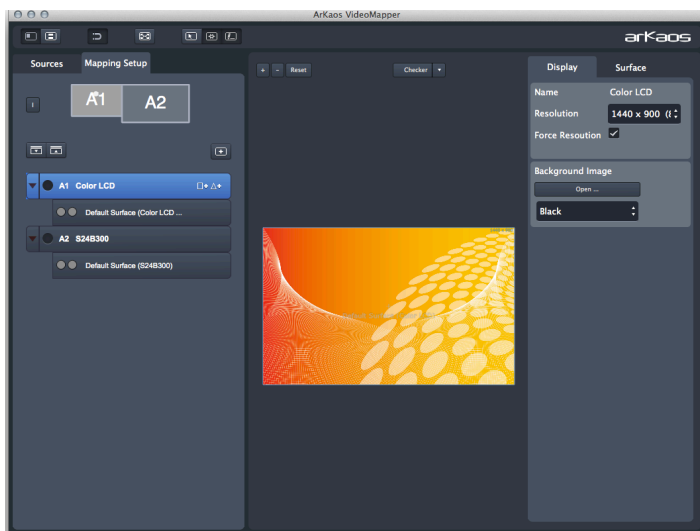
It's important to know that the video rendering of MediaMaster occurs on one graphical card. If you would create surfaces on a display that's on another graphical card, be aware that you may experience reduced performances due to memory transfers between the different graphical cards going through the main memory.

If possible, it's advised to use the same graphical card to drive all the displays, eventually using a video splitter device. If you absolutely need to use several graphical cards, then you should connect the displays with the biggest resolution to the main graphical card.

Video Mapper application

The Video Mapper application allows you to manage your displays and create/edit surfaces that will be used by MediaMaster to display its layers in Video Mapper Mode.

Interface overview



Display Browser

The left side of the application shows a list of available displays. Each display contains surfaces, which can be deleted, copied directly in the browser.

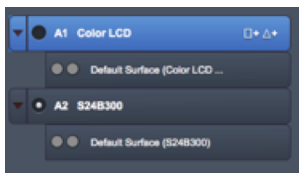
Surface Editor

The "surface editor", in the central panel, shows the surfaces of the selected displays. It is a preview of the result you will obtain on the related display in full screen..

Inspectors

The right panel is an inspector that shows parameters of the selected surface (tab "surface") or parameters of the selected display (tab "display").

Setting up displays and surfaces in the display browser



Each connected display (as detected by your operating system) is listed in the display browser. Disconnected displays are shown in red. Below each display item appears the list of surfaces (click on the arrow on the left to expand the display item).

Each display can be enabled or disabled by clicking on the left check box. Disabled displays won't go full screen when the global full screen button is activated (the display showing the Video Mapper interface is disabled by default).

To create a new surface, click on the rectangle or triangle that appears on the right when the display item is selected.



The list of surfaces on a display is like a stack of layers. The first surface will be displayed on top of the others. You can change the ordering of the surfaces by dragging them around in the list.

Note:

The first letter of identification before the display name (A1, A2, B1, etc..) represents the GPU to which the display is connected. Two displays named A1 and A2 means that they are connected to the same graphical card.

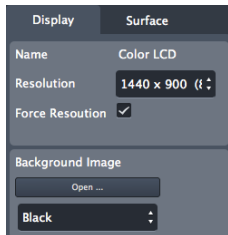
Draft Display

You can create a “draft display” by clicking the “add draft display” button above the display browser on the right. Draft displays can be used when the display you want to use in your final setup is not connected. Create your mapping on a draft display and, later, copy/paste the surfaces to the final display. The draft display can be deleted once the job is done (right-click on the draft display item and choose “delete”).



Full screen

To activate the full screen, press CTRL+F (Command+F on Mac) or click on the full screen button in the toolbar. The Video Mapper keep the full screen state in memory. So, when you start the Video Mapper, the full screen will automatically be enabled if it was enabled the last time you closed the application.



Editing Display Properties

When you click on a display item in the display editor, or when you click on the display tab in the right inspector, the properties related to the display are shown in the inspector. You can choose the resolution of the display and its frequency. The “Force Resolution” option will change the resolution of the display to match the resolution in the “Resolution” combo box. The background of the display can be set to black, grey, or bitmap image (you can choose the image file by clicking on the “open button”).



Editing Surface Properties

When you select a surface, its properties are displayed in the right inspector. You can modify geometrical parameters by editing the surface directly in the graphical editor (for example modify the width or the height of a rectangle by dragging the middle handles of the rectangle) or enter numerical values in the inspector.

The X and Y parameters are the coordinates of the surface. This position is by default the top-left corner for rectangles and the center for triangles. If the option “Display Top Left Coordinates” is unchecked in the view menu, the position of the rectangles will be centered.

The R parameter is the rotation of the surface. The rotation can also be modified by dragging the rotation handle in the graphical editor

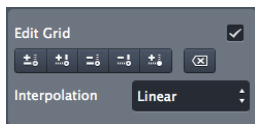
The other parameters depend on which surface you are editing.

• Triangles

You can edit the position of the three corners of the triangle (parameter X-Y in the inspector).

• Rectangles

You can modify the width and the height of the rectangle (parameter W-H in the inspector).



The rectangle can also be deformed using a grid pattern. To enable the grid, check the option “Edit Grid” in the inspector

When the grid is enabled each control point of the grid can be dragged separately. To add or remove control points, use the buttons just below the edit grid option.



Add control points that will divide the grid horizontally



Add control points that will divide the grid vertically



Remove control points that will divide the grid horizontally



Remove control points that will divide the grid vertically



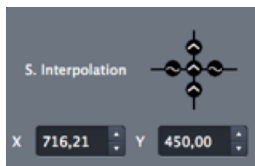
Add a point anywhere in the grid (then click in the grid to set its position)



Reset the grid; remove all the control points.



The interpolation between the control points can be linear or curved. To set the interpolation for all the control points of the grid, use the interpolation combo box .



To set the interpolation separately for each control point, select a control point in the graphical editor, the interpolation editor then appears. It represents the control point with its four adjacent segments. Each segment can be set to linear or curve.

The position of the selected corner box or the selected control point can be edited with the arrow keys of the keyboard. To move the point of 20 pixels, press alt while moving the point. To move the point of 0.05 pixels, press Cmd (Cmd on mac) while moving the point.

Masks

Any image file can be used as mask that can be applied on the surfaces. The average of the RGB colors will be used if the source is a color image.

Click on the “Open” button to load an image. Make sure that the “Enable” button is checked.

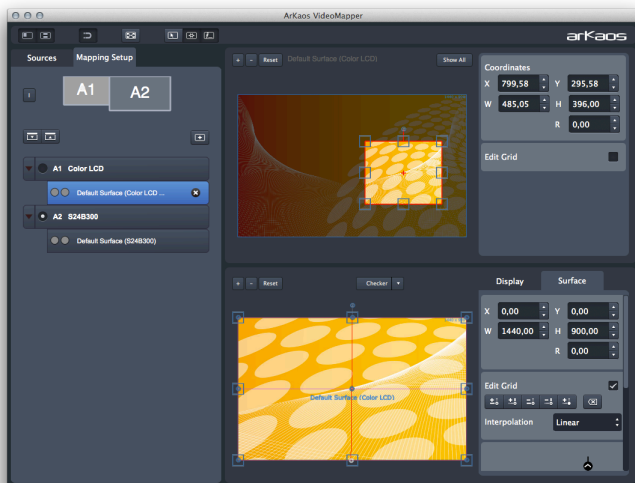
The following options are available to modify the mask:

- Invert: invert the grayscale source image before applying the mask
- Black: the masked part of the image is black
- Trans: the masked part of the image is transparent.

Cropping

For each surface the visual source can be cropped. To show the cropping panel, click on the “Show Crop Panel” button in the toolbar.





You can then edit the cropped zone the same way you edit the surfaces in the surface editor. The four corners of rectangle cropping zones can be moved separately if you check the option "Edit Grid".

The "Show All" button allows seeing the cropping zones corresponding to all the surfaces of the display. This option is useful if you want "cut" a visual into several surfaces.

Show All

Visual Sources

The visual source of the Video Mapper can be an image or Media Master (when the "Video Mapper Mode" is on). If Media Master is running, the source will automatically switch to MediaMaster. To add an image to the list of sources, click on the "Load Image" button above the list. Double click on an item of the list to select that source.

Export and Import of Mapping Files

The mapping file is constantly saved internally by the Video Mapper. You can export your mapping using the "Export" option in the "File" menu. The exported file (.vmp file) contains the configuration of the output groups of MediaMaster as well. You can import external mappings using the "Import" option in the "File" menu.

Tool bar options



Snap: surfaces will snap with each other and with the borders of the surface editor.



Show cursor on full screen: show the cursor position on the full screen displays.



Surface selection flash: the active display will flash each time you select a surface.



Surface info on full screen: show the surface edition objects (surface borders, handles, center and name) on the full screen display.

Key Bindings

Sampling Editor Shortcut Keys

- Middle Mouse Button : Pan View
- Scroll Wheel : Zoom View In/Out
- Shift + Left Mouse Click : Multi selection
- Shift + Surface Rescale : Aspect Ratio Rescale
- Arrow Keys : Move Selected Surface (1 pixel)
- Alt + Arrow Keys : Move Selected Surface (10 pixels)
- Ctrl + Arrow Keys (Cmd + Arrow Keys on Mac) : Move Selected Surface (0.1 pixel)
- Ctrl + i (Cmd + i on Mac) : Hide All Surfaces Except The Selected One
- Ctrl + shift + i (Cmd + shift + i on Mac) : Show All Surfaces

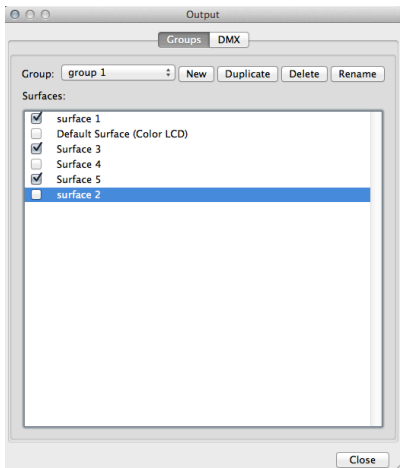
Grid Surface Shortcut Keys

- R : Reset Grid
- F1 : Add Horizontal Control Points
- F2 : Remove Horizontal Control Points
- F3 : Add Vertical Control Points
- F4 : Remove Vertical Control Points
- F6 : Change Grid Interpolation Type
- F7 : Toggle Control Point Interpolation Type
- TAB + Arrow Keys : Change Control Point Selection
- Right Click Inside Grid: Selection Box Around Control Points

Application Shortcut Keys

- Ctrl + I (Cmd + I on Mac) : Move The Video Mapper Window To Cursor Position
- Ctrl + G (Cmd + G on Mac) : Surface Snap
- Ctrl + E (Cmd + E on Mac) : Show crop panel
- Ctrl + F (Cmd + F on Mac) : Go full screen
- Ctrl + N (Cmd + N on Mac) : New Mapping
- Ctrl + O (Cmd + O on Mac) : Import a Mapping File
- Ctrl + shift+ S (Cmd + shift+ S on Mac) : Export a Mapping File
- Ctrl + P (Cmd + P on Mac) : Open Preference Dialog
- Ctrl + Q (Cmd + Q on Mac) : Quit The Application

Output management in MediaMaster Pro



The output management dialog is used both for output group management and to reassign an output to a different DMX value.

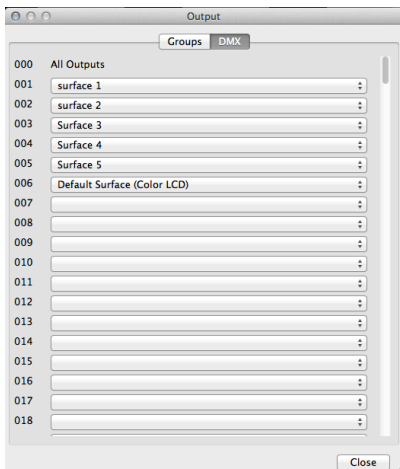
The dialog can be called by pressing CTRL+O (Windows) / Cmd+O (Mac).

Groups

This dialog gives you the possibility to create groups of outputs so you can display a layer on several outputs at once.

You can select and edit an existing group, rename it, duplicate it and finally create a new group from scratch.

DMX (Fixture mode only)



MediaMaster assigns the Video Mapper Surfaces, Full screen Display and Output Groups to a specific DMX value depending on the following ranges and on what's already assigned in the list:

- “All” outputs is assigned to 0
- Video Mapper Surfaces and Full screen Display (Instant mode) outputs are assigned between 1 and 199
- Output Groups are assigned between 200 and 249
- LED Mapper output is assigned to 250
- Kling-Net output is assigned to 251
- Values between 252 and 255 are reserved for further versions

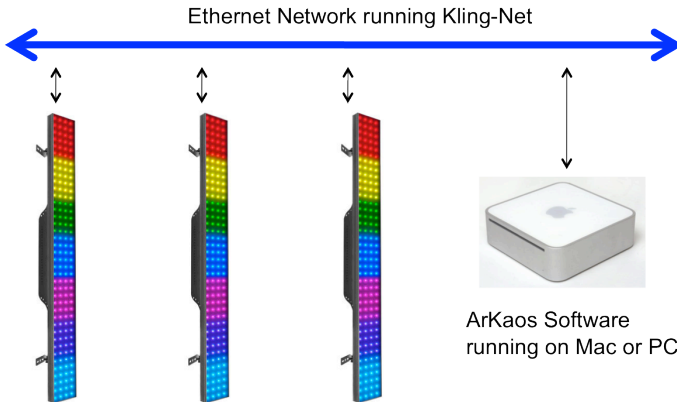
You can reassign an output by selecting it at the new target DMX value, within its respective range.

If there's already an output assigned at this DMX value, it will be swapped with the newly assigned one.

Pixel Mapping over Kling-Net

Concepts

Kling-Net is a protocol designed to simplify the setup and operation of display devices such as LEDs or LED panels. Those LED panels being connected to a computer through a standard Ethernet network.



The purpose of Kling-Net is:

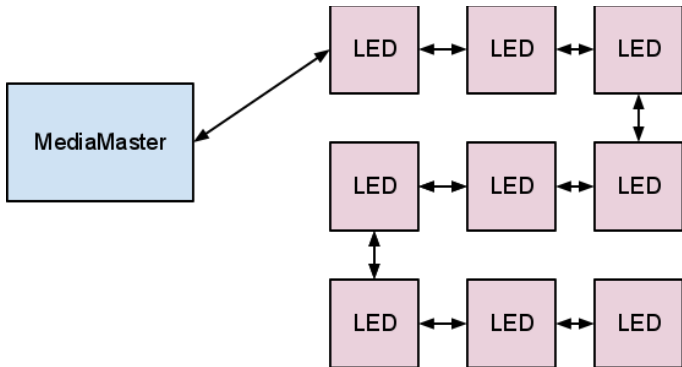
- To allow the connection of display devices to a computer through an automatic configuration
- To dynamically configure the network by assigning IP numbers to the LED devices
- To ensure a perfect time synchronization of many display devices
- To avoid using expensive hardware video converters usually needed to send video to display devices
- To allow creating a heterogenic network of display devices made by different manufacturer and controlled by a simple computer
- To add some intelligence into display devices in order to allow device auto configuration

Kling-Net has nothing in common with DMX, ArtNet or E1.31 (also called Streaming ACN), its networking requirements are much more open and friendly.

Hardware setup

Kling-Net is designed to make the best use of your Ethernet network.

To make your network as simple as possible, you can connect the devices directly to your server:



Kling-Net requires a Gigabit compatible Ethernet card (1000 Mbps), if you use a 100 Mbps network Kling-Net will run fine but the number of device that can be used will be limited.

Kling-Net offers a lot of flexibility concerning the IP addresses you can use.

The address of the server should be in the range of local IP addresses:

- 2.0.0.0 to 2.255.255.255
- 10.0.0.0 to 10.255.255.255
- 172.16.0.0 to 172.31.255.255
- 192.168.0.0 to 192.168.255.255

Note:

Kling-Net attributes IP addresses to the LED devices when they power up. If you change the IP address of the server you must power down/up the LED devices and restart MediaMaster.

Mapping workflow overview

This Kling-Net Mapper is designed to communicate with MediaMaster. The mapper and MediaMaster can run at the same time on the same machine or different machines on the same network. You can select who is sending video to the LEDs through the output menu.

The typical workflow is:

1. launch MediaMaster, go to the Preferences window, activate Kling-Net
2. launch the Kling-Net mapper application (you can launch it from the Preferences window in MediaMaster)
3. set the output to "Test pattern" in the Kling-Net Mapper application
4. create the mapping and test it on your devices to make sure that it looks fine
5. send the mapping to MediaMaster by clicking the Send button on the top left
6. select MediaMaster as output in the output menu

If you need to re-edit the mapping, you can restart the workflow from step 3.

You can save the mapping file just in case you need to use it again later, but once you sent the mapping to MediaMaster via the send button, it will automatically be saved in the MediaMaster library.

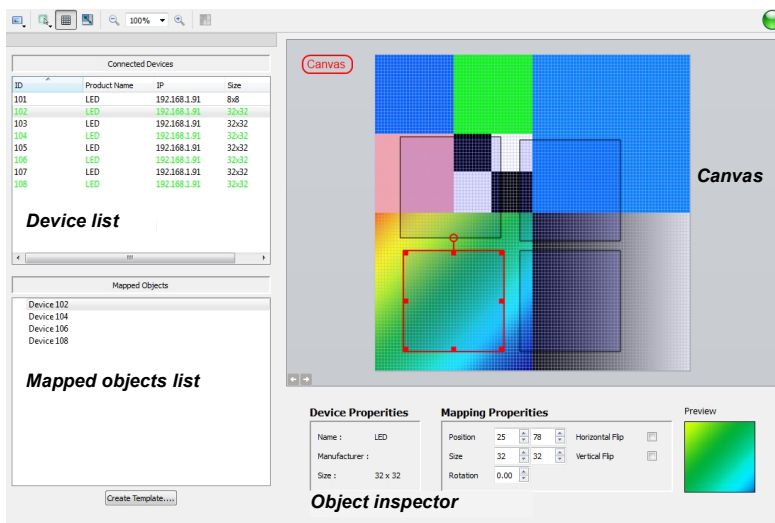
The send button on the top left in the Kling-Net Mapper application:



Kling-Net mapper application

Overview

The Kling-Net Mapper application is where you define areas of the MediaMaster video output that will be sent to the LED devices.



The video output is represented by the mapper canvas. The connected devices are listed in the left panel. To add a device in the setup, simply drag and drop a device on the canvas. It will automatically create a "mapping rectangle". The area included in the rectangle will be grabbed and sent to the corresponding device.

The application has been designed to be simple and easy to use. Each manipulation of device mapping are immediately reflected on the real led device. This is very handy because some setups can be very complex, driving many devices. It also makes the process of using the mapping in ArkKaos MediaMaster as seamless as possible.

The mapper should primarily be used for calibration, so background images used in the canvas are still test pattern images. You can also use a screen grabber to preview the result on moving images.

Of course, once you've created your mapping, MediaMaster will use it to feed the LEDs with video streams, movies, text with effects or whatever you want.

Device lists

The "Connected Devices" panel shows the list of the devices that are currently connected to the mapper or that were connected in the past. Information like device ID, product name, IP address and size are displayed here.

Devices that are already mapped on the canvas are shown in green while unmapped devices appear in black. Disconnected devices will be shown in red.

Connected Devices			
ID	Product Name	IP	Size
101	LED	192.168.1.91	8x8
102	LED	192.168.1.91	32x32
103	LED	192.168.1.91	32x32
104	LED	192.168.1.91	32x32
105	LED	192.168.1.91	32x32
106	LED	192.168.1.91	32x32
107	LED	192.168.1.91	32x32
108	LED	192.168.1.91	32x32

Mapped device

Unmapped device

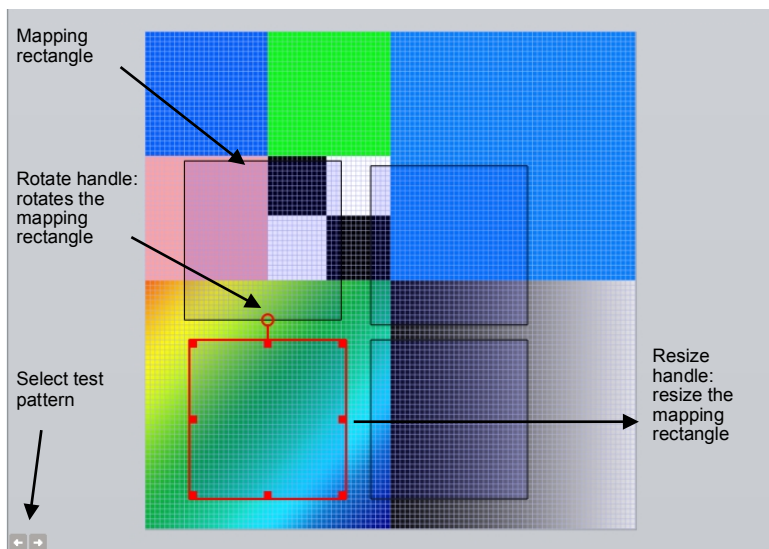
To map a device, simply drag and drop the item in the list onto the canvas. This will create a mapping rectangle on the canvas, representing the area that will be sent to the device.

The device ID for each mapped item will also appear in the "Mapped Objects" list.

The canvas

The canvas represents the entire output from which some areas will be grabbed and sent to the LED devices.

You can change the test pattern by clicking on the left and right arrows at the bottom-left corner of the panel. You can also choose your own image or image directory with the "Choose Test Image" and "Choose test image directory" menu entries from the "File" menu.



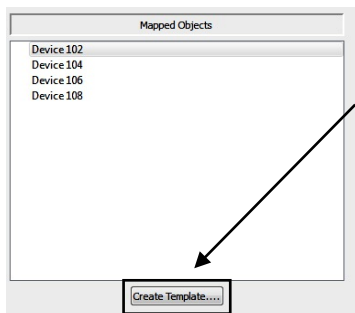
The size of the canvas is the size that will be used to render animation clips in MediaMaster. You can change it using the “Canvas Size” menu entry in the “Canvas” menu. You can also automatically adjust the canvas size to the selected devices using the “Crop To Selection” menu entry.

To edit mapping properties for devices, just click on a mapping rectangle on the canvas. Properties will appear in the object inspector, at the bottom of the screen.

Kling-Net devices can also be split horizontally in the Kling-Net Mapper. Each piece of device can be mapped independently even if they are connected through a Kling-Net junction box.

The number of “sub-devices” can be set in the device properties of any device. The sub-devices will then appear as normal devices in the device list.

Templates

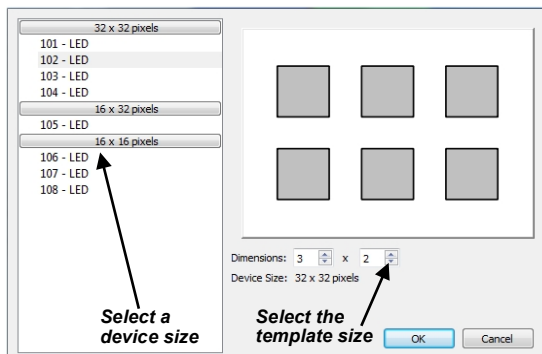


Templates are the easiest way to map several devices of the same size in a grid.

To create a template click on the “Create Template” button at the bottom of the mapped devices list.

This will open the Template Creation dialog box.

The Template Creation dialog box shows a list of available sizes on the left. Choose the size of the devices you want to map in the list. The dimensions parameter modifies the number of devices you can map on the template.



To map devices on the template, double click on it or click on the template map mode icon in the toolbar. When the map mode is activated, everything is frozen in the graphical editor, the only thing you can do is drag and drop devices on the template.

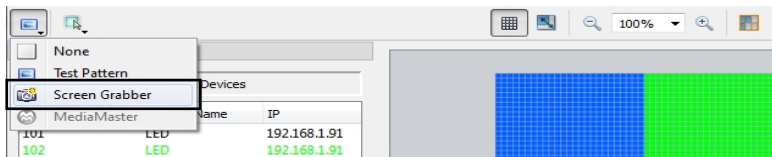
You can only drag and drop devices with the right size, as defined in the template creation dialog. When you're ready with the mapping, double click out of the template to come back to the normal mode.

Devices mapped into a template are "attached" to it. Therefore it is easy to edit a set of devices which belong to a template.

A supplementary parameter is available for templates in the object inspector: "interspaces". It allows you to define interspaces between each device in the template.

Screen grabber

The screen grabber allows to grab any part of the screen and send it to the mapped devices. To activate it, click on the output icon in the toolbar (the first one on the left), and select "screen-grabber" in the drop down menu.



A red rectangle will appear, representing the background images that will be sent to the devices. The rectangle has the same resolution as the canvas size. You can drag it to choose the capture zone on your screen.

Display LED mapping in MediaMaster

While the Kling-Net mapper is running..

If you have created and edited a mapping and want to display it in MediaMaster you must do two simple actions:

1. Send the mapping to MediaMaster

To do this you can simply use the send button on the top left of the interface. Another way is to archive your mapping by saving it to disk and from the preference of MediaMaster import the mapping file. Using the send button is the fastest way.

The send button on the top left in the Kling-Net Mapper application:



2. Switch the output to MediaMaster

From the output menu, switch the video output back to MediaMaster.

While the output is set to MediaMaster you can continue to edit your mapping and use the send button to update the output in MediaMaster.

Note:

You can read the section "Output Tab" at page 44 **Error! Bookmark not defined.** of this manual to get more details about the configuration of Kling-Net in MediaMaster.

While Kling-Net Mapper is not running..

When MediaMaster starts, if no Kling-Net Mapper is running it will send video to the Kling-Net devices if Kling-Net is activated.

If you already loaded the mapping in a previous session MediaMaster will restore the mapping automatically. There is nothing to do.

If you want to load a new mapping file you must use the Output Tab in the Preferences window.

Pixel Mapping over DMX

MediaMaster Express and Pro can also be used to drive LED, dimmers or other color changing devices over DMX in addition to sending high resolution video content to conventional projection or display devices with DVI, VGA or S-Video input,.

In order to use the pixel mapping output over DMX you must first build a "mapping file". This is created using the ArKaos LED Mapper software, which is installed alongside the main MediaMaster program and allows you to configure what type of LED fixtures you are using, their DMX addresses and what pixels of your output screen they are related to.

The LED mapping samples the video output buffer and as such full screen output must be enabled for pixel mapping to work.

More information on creating a mapping file can be found in the documentation that comes with the LED Mapper software extension.



*LED Mapper
extension icon*

With the mapping file created and loaded into MediaMaster, the software will output DMX values for each pixel that has been mapped based on the color and intensity of that pixel in your master video output.

This output of DMX can be done **SIMULTANEOUSLY** with the main video output – allowing you to use DMX controlled color mixing fixtures alongside your display devices.

For example you may have a central projection display in the middle of the stage and surround it with LED color mixing tubes which would also respond to the same content and be controlled via MediaMaster.

The LED Mapper software include profiles for many of the leading LED fixtures currently on the market and the latest version of the LED Mapper Library installed alongside MediaMaster 2 adds profiles to support the use of LED panels from Schinck-Shnack systems.

Note:

For more information on how to activate LED Output in MediaMaster, read the section "Output Tab" from the Preferences Dialog at page 44.

Performance tips

Achieving the very best performance with video depends on a lot of different hardware factors so is dependent on the system you chose to run the ArKaos software.

- CPU speed
- Disk speed
- RAM access speed
- Video hardware & video bus speed
- Movie compression

In MediaMaster, most of the graphic processing is done in the graphic chip of the video hardware, so the more powerful it is, the better performance you are going to get. The CPU is mainly used to decompress movie frames from the disk and send them to the video card. The faster your drives are, the faster frames will be loaded in the memory and the faster your CPU is, the faster it will decompress the frames.

There are two main ways, which can help in achieving a good frame rate with your hardware:

1. Adapt the resolution of the internal computation. See (Preferences / Display)
2. Use a source material that is adapted to your hardware. If you have a slow disk or older generation of hardware, try working with smaller video sources to minimize the impact of loading and decompressing the movie. Since all calculations are done inside the graphic card, the automatic filtering applied when the images are scaled to the final resolution will minimize aliasing effects.

Monitor Rate Versus Movie Rate

If you want your movies to be really smooth, you need them to be in accordance with the monitor frequency to ensure that each time there is a frame to show, you have a monitor refresh.

So if your movies are 30 FPS, the monitor needs to be at 60 Hz and if they are at 25 FPS, you need to use either 50 Hz or 75 Hz.

Be also careful that depending on your chosen resolution, the choice of frequencies might change so it's important that once your setup is done, you put MediaMaster in Full Screen and get the monitor reading from the status panel.

Hardware dependencies

If you do spans across the two outputs of a graphic card, there's no guarantee the two outputs will run at the exact same frequency, which can also produce jitter. It is sometimes more efficient to make a wide output from one head using Matrox's DualHead2Go / TripleHead2Go than to do a span across the two outputs.

OS dependencies

Some performance issues that are only valid with respect to the operating system.

Windows OS

Make sure is that you run the software in Exclusive mode since it's the only mode that will ensure correct locking to vertical blanks. To turn on Exclusive mode, activate the option "Force Resolution" (in Preferences/Display)

Mac OSX

Mac OSX is a sensitive platform. If you display the full screen on one monitor, all system drawing on the other monitor can cause the full screen to glitch. *No matter what application.*

We have adapted the way the MediaMaster interface updates itself so that it won't be interfering with the output but any other program updating its GUI will most likely be a problem.

For this reason, in order to achieve the most fluid display under Mac OSX, we recommend to either quit or hide other visible window. For example, even the refresh of the clock in the menu bar can lead to one frame skipping.

Preview windows

Previewing the layers or the output consumes a significant part of the graphical card resources.

In order to get the most performances for the full screen display(s), we recommend to prevent the preview windows from updating but setting the "Preview style" parameter to "Off" in the performances tab of the preferences window.

Movie Compression

Besides size, the movie compression used has a huge impact both on the fluidity of the display and the movie playability. The software is using internally FFmpeg to decode most codecs and doesn't need to use QuickTime or another decoder which takes up more hardware resources to complete.

MPEG-2 is the compression codec that we have found to give the best performances in most configurations, if playing the movie forward at a reasonable speed.

Note:

The more complex or heavier the compression used, the more work the processor will have to do to decompress the video for playback and this can result in reduced performance.

In addition to the compression method itself, there's the issue of key frames. Most widely spread compression mechanism work using incremental methods, which means they construct a frame by storing the difference between a frame and the previous one (temporal compression).

In order to keep the process from deriving too much from the original material, they store an original frame every now and then, and start again coding incremental information from that frame on. These original frames are called 'key frames'.

Using sparse key frames will mean that for MediaMaster to access a given frame, it will have to find the previous key frame and process all the intermediate frame differences until it reaches the desired one.

This is not a problem until you play your movie with special loop modes (such as ping-pong) or when increasing playback speed (changing movie speed channel).

The bitrate of the movie will define how much data is stored per second of video. Increasing the bitrate increases quality, and necessary hard disk bandwidth and CPU load for decompression.

The bitrate must be high depending on the movie resolution. For instance for a full HD movie (1080p = 1920x1080), the recommended bitrate is between 15 Mbps and 40 Mbps (Mega bit per second). To play multiple movies in high resolution at the same time, it is recommended to use a multi-core CPU and multiple hard drives in a RAID array.

If you are not satisfied with MPEG-2 quality, or if you need to play your movies with various playback modes (backward etc.) it is recommended to use a movie without temporal compression.

The most adapted for MediaMaster is the QuickTime PhotoJPEG codec. It will be handled directly by the application without using QuickTime (through the internal FFmpeg player). Setting the quality between 60% and 80% is generally enough.

Fixtures DMX Chart – Pro Version

The latest release of MediaMaster includes the updated fixtures first seen in V1.2. These allow DMX control of the new fixture attributes available in version 1.2 and version 2. Both fixture types are available in the preferences settings for MediaMaster Pro with fixture types 1.0 being the older versions and fixture types 1.1 being the new versions with additional attributes.

Layer Mini 1.0

	Chan.	Ranges	Snap/ Instant	Def. Value	Locate Value	Category
1	Dimmer	0-100%	No	0	255	DIMMER
2	Visual Library	0-15 Folder 0	Yes	0	0	BEAM
		16-31 Folder 1				
		32-47 Folder 2				
		48-63 Folder 3				
		64-79 Folder 4				
		80-95 Folder 5				
		96-111 Folder 6				
		112-127 Folder 7				
		128-143 Folder 8				
		144-159 Folder 9				
		160-175 Folder 10				
		176-191 Generators				
		192-207 Audio Flash				
		208-223 FlashTexts 1				
		224-239 FlashTexts 2				
		240-255 Cameras				
3	File	0-15 No Visual	Yes	0	1	BEAM
		16-31 File 1				
		32-47 File 2				
		48-63 File 3				
		...				
		240-255 File 15				
4	Effect	0-15 No Effect	Yes	0	0	BEAM
		16-31 RotoZoom				
		32-47 Cube Inside				
		48-63 Tile Scrolling				
		64-79 Plane				
		80-95 Tunnel				
		96-111 Kaleido				
		112-127 Radial Blur				
		128-143 Motion Blur				
		144-159 Mirror				
		160-175 AsciiArt				
		176-191 Split Scrolling				
		192-207 Greyscale				
		208-223 Invert				
		224-239 RGB Cycle				
		240-255 Larsen Simple				
5	Position	0-100%	No	0	0	POS or BEAM

Layer Tiny 1.0

	Chan.	Ranges	Snap/ Instant	Def. Value	Locate Value	Category
1	Dimmer	0-100%	No	0	255	DIMMER
2	Visual Library	0 User Folder 0	Yes	0	0	BEAM
		1 User Folder 1				
		...				
		239 User Folder 239				
		240 Generators				
		242 Audio Flahs				
		250 FlashTexts 1				
		251 FlashTexts 2				
		252 FlashTexts 3				
		253 FlashTexts 4				
		254 Cameras				
		255 Masks				
3	File	0 Prev. Layer	Yes	0	1	BEAM
		1-255 File 1-255				
4	Effect Library	0-15 3D	Yes	0	0	BEAM
		16-31 Color				
		32-47 Blur				
		48-63 Split				
		64-79 Artistic				
5	Effect	0 No Effect	Yes	0	0	BEAM
		1-255 Effect 1-255				
6	Effect Parameter	0-100%	No	128	128	BEAM
7	Red level	0-100%	No	255	255	COLOR
8	Green level	0-100%	No	255	255	COLOR
9	Blue level	0-100%	No	255	255	COLOR
10	ScaleX - coarse	0-100%	No	255-255	255-255	POS
11	ScaleX - fine					
12	ScaleY - coarse	0-100%	No	255-255	255-255	POS
13	ScaleY - fine					
14	Pan/PositionX - coarse	0-100%	No	128-128	128-128	POS
15	Pan/PositionX - fine					
16	Tilt/PositionY - coarse	0-100%	No	128-128	128-128	POS
17	Tilt/PositionY - fine					
18	PositionZ - coarse	0-100%	No	128-128	128-128	POS
19	PositionZ - fine					
20	Text	0-255 Text 0-255	Yes	0	0	BEAM

Layer Full 1.1

	Chan.	Ranges	Snap/ Instant	Def. Value	Locate Value	Category
1	Dimmer	0-100%	No	0	255	DIMMER
2	Visual Library	0 User Folder 0	Yes	0	0	BEAM
		1 User Folder 1				
		...				

	Chan.	Ranges	Snap/ Instant	Def. Value	Locate Value	Category
		239 User Folder 239				
		240 Generators				
		242 Audio Flahs				
		250 FlashTexts 1				
		251 FlashTexts 2				
		252 FlashTexts 3				
		253 FlashTexts 4				
		254 Cameras				
		255 Masks				
3	File	0 Prev. Layer	Yes	0	1	BEAM
		1-255 File 1-255				
4	Effect Library	0-15 3D Presets	Yes	0	0	BEAM
		16-31 Color Presets				
		32-47 Blur Presets				
		48-63 Split Presets				
		64-79 Artistic Presets				
		80-95 3D (Custom)				
		96-111 Color (Custom)				
		112-127 Blur (Custom)				
		128-143 Split (Custom)				
		144-159 Artistic (Custom)				
		160-175 Quartz-Composer				
5	Effect	0 No Effect	Yes	0	0	BEAM
		1-255 Effect 1-255				
6	FX Parameter 1	0-100%	No	128	128	BEAM
7	FX Parameter 2	0-100%	No	128	128	BEAM
8	FX Parameter 3	0-100%	No	128	128	BEAM
9	FX Parameter 4	0-100%	No	128	128	BEAM
10	Text	0-255 Text 0-255	Yes	0	0	BEAM
11	Shape	0-31 Plane	Yes	0	0	POS
		32-63 Cube				
		64-95 Sphere				
12	Tiling	0-100%	No	0	0	POS
13	Copy Mode	0-31 Copy	Yes	0	0	COLOR
		32-63 Add				
		64-95 Subtract				
		96-127 Multiply				
		128-159 Minimum				
		160-191 Maximum				
14	Mask Mode	0-31 None	Yes	0	0	COLOR
		32-63 LumaKey BR				
		64-95 LumaKey BP				
		96-127 ChromaKey BR				
		128-159 ChromaKey BP				

	Chan.	Ranges	Snap/ Instant	Def. Value	Locate Value	Category
15	Mask center	0-100%	No	0	0	COLOR
16	Mask width	0-100%	No	50	50	COLOR
17	Mask Smooth	0-100%	No	20	20	COLOR
18	Speed	0-100%	No	64	64	BEAM
19	Loop Mode	0-31 Loop Forward	Yes	0	0	BEAM
		32-63 Loop Backward				
		64-95 Once Forward				
		96-127 Once Backward				
		128-159 Ping pong				
		160-191 First Frame				
		192-223 Last Frame				
		224-227 Once and Freeze Forward				
		228-231 Once and Freeze Backward				
20	Loop Start - coarse	0-100%	No	0-0	0-0	BEAM
21	Loop Start - fine					
22	Loop End - coarse	0-100%	No	255- 255	255-255	BEAM
23	Loop End - fine					
24	Red level	0-100%	No	255	255	COLOR
25	Green level	0-100%	No	255	255	COLOR
26	Blue level	0-100%	No	255	255	COLOR
27	ScaleX - coarse	0-100%	No	255- 255	255-255	POS
28	ScaleX - fine					
29	ScaleY - coarse	0-100%	No	255- 255	255-255	POS
30	ScaleY - fine					
31	RotationX - coarse	0-100%	No	128- 128	128-128	POS
32	RotationX - fine					
33	RotationY - coarse	0-100%	No	128- 128	128-128	POS
34	RotationY - fine					
35	RotationZ - coarse	0-100%	No	128- 128	128-128	POS
36	RotationZ - fine					
37	Pan/PositionX - coarse	0-100%	No	128- 128	128-128	POS
38	Pan/PositionX - fine					
39	Tilt/PositionY - coarse	0-100%	No	128- 128	128-128	POS
40	Tilt/PositionY - fine					
41	PositionZ - fine	0-100%	No	128- 128	128-128	POS
42	PositionZ -coarse					
43	Output	0 All outputs	Yes	0	0	BEAM
		1-199 Display outputs				

Chan.	Ranges	Snap/ Instant	Def. Value	Locate Value	Category
	200-249 Output Groups				
	250 LED Mapper output				
	251 Kling-Net output				

Layer Full 1.0

Layer Full 1.0 is similar to Layer Full 1.1 with the exception than in the Fixture Full 1.1 we added support for the Quartz Composer effects (Mac OS X only). The channel mapping is not changed but the library of effects has been expanded. Those are accessed by the channels offset 4 and 5: EFFECT LIBRARY and EFFECT.

Prior to MediaMaster 3.x, the 43rd channel of the Layer Full 1.0 and 1.1 wasn't used and reserved for future updates.

In order to keep the backward compatibility, Layer Full 1.0 and 1.1 have been modified in MediaMaster 3.x to change the 43rd channel's name to "Output".

The only other changes in MediaMaster 3's Layer Full table are the two new playback modes "Once and Freeze Forward" and "Once and Freeze Backward" on the 19th channel.

Master Small 1.0

	Channels	Ranges	Snap/ Instant	Def. Value	Locate Value	Category
1	Brightness	0-100%	No	128	128	BEAM
2	Contrast	0-100%	No	0	0	BEAM
3	Mask	0 No Mask	Yes	0	0	BEAM
		1-255 Mask 1-255				

Master Full 1.0

	Channels	Ranges	Snap/ Instant	Def. Value	Locate Value	Category
1	Brightness	0-100%	No	128	128	BEAM
2	Contrast	0-100%	No	0	0	BEAM
3	Mask	0 No Mask	Yes	0	0	BEAM
		1-255 Mask 1-255				
4	KeystoneX1	0-100%	No	0	0	POS
5	KeystoneY1	0-100%	No	0	0	POS
6	KeystoneX2	0-100%	No	0	0	POS
7	KeystoneY2	0-100%	No	0	0	POS
8	KeystoneX3	0-100%	No	0	0	POS
9	KeystoneY3	0-100%	No	0	0	POS
10	KeystoneX4	0-100%	No	0	0	POS
11	KeystoneY4	0-100%	No	0	0	POS
12	SoftEdge width	0-100%	No	0	0	BEAM
13	SoftEdge curve	0-100%	No	0	0	BEAM

Master Full 1.1

	Channels	Ranges	Snap/ Instant	Def. Value	Locate Value	Category
1	Brightness	0-100%	No	128	128	BEAM
2	Contrast	0-100%	No	0	0	BEAM
3	Mask	0 No Mask	Yes	0	0	BEAM
		1-255 Mask 1-255				
4	KeystoneX1	0-100%	No	0	0	POS
5	KeystoneY1	0-100%	No	0	0	POS
6	KeystoneX2	0-100%	No	0	0	POS
7	KeystoneY2	0-100%	No	0	0	POS
8	KeystoneX3	0-100%	No	0	0	POS
9	KeystoneY3	0-100%	No	0	0	POS
10	KeystoneX4	0-100%	No	0	0	POS
11	KeystoneY4	0-100%	No	0	0	POS
12	SoftEdge width	0-100%	No	0	0	BEAM
13	SoftEdge curve	0-100%	No	0	0	BEAM
14	Layer Select	0-100%	No	0	0	
15	Master volume	0-100%	No	0	0	
16	Master blackout	0-250 Normal	No	0	0	BEAM
		251-255 Blackout				

Terminology / Glossary of Terms

- **ArtNet** – An open source data protocol, now often recognized as an industry standard, for the broadcast of DMX data over a standard Ethernet network.
- **DMX** – A digital multiplexed data stream used for control of lighting and video devices.
- **Fixture** – For operation of the software from a lighting console the multiple attributes for each layer as well as global commands are arranged into a fixture profile – in exactly the same way as if you were to control an automated lighting instrument from a console where you would have multiple parameters for each light – such as pan, tilt, color, intensity etc.
- **Keystoning** – The process of Keystoning allows you to digitally alter the proportions of the image in order to help fit the output to the screen.
- **Layer** – This describes one complete element of video composition including media, effects and parameter definition. These layers of video are blended or mixed together to created the final output.
- **LTP** – This stands for Last Takes Precedence and is a lighting term used to describe how data is managed where the last value of data sent – be it lower or higher than the previous data – is regarded as having priority.
- **MA-Net** – This is the data protocol proprietary to GrandMA that allows fast communication between all Ma-Net compatible devices.
- **Mask** – A 2D image of which certain sections are transparent which is used over the top of other video data to hide or mask out certain areas of the output image. The digital equivalent of putting a piece of black card with a shape cut out of it in front of your TV.
- **MSEX** – MSEX stands for Media Server Extension and is a protocol that runs on top of DMX over Ethernet allowing for bi-directional communication between the media server and console.
- **Display** – A Display is a device that's connected to the computer graphical card using DVI, HDMI, DisplayPort or VGA connectors. A computer monitor, a television screen, a video projector are different kind of displays.
- **Output** – An output is the destination of the video content coming from a combination of layers. The Full screen Display in Instant mode, Kling-Net, the LED Mapper or all the Video Mapper Surfaces are different outputs – It's possible to create groups of outputs using the dedicated Output management dialog.
- **Surface** – A Surface is a shape that's created on a specific Display using the Video Mapper application. Each Surface is a separated output in MediaMaster.
- **Parameter** – A specific function of the software which has a fixed range and the setting of which will affect the output. For example the playback speed of a piece of video is a parameter.
- **Patch** (Simple Mode interface Only) – A collection Visual presets (see below) contained within a master group number. The Simple Mode has 64 patches.
- **Quartz Composer** – Quartz Composer is a node-based visual programming language provided as part of Mac OS X for processing and rendering graphical data.
- **Surface:** Deformable shape attached to a display, created in the Video Mapper. Each surface is considered as a separate output by MediaMaster, meaning that each can display a different set of visuals.

- **Virtual Encoder** – The same as a rotary dial on a physical console, a virtual encoder allows you to change the setting of a specific parameter. To use the virtual encoders click and hold on the encoder graphic and then move the mouse up or down the screen to increase or decrease the encoder value: this is shown with a series of white bars around the encoder.
- **Visual** – In ArKaos a visual refers to a video, an image, a text display or input from a camera or acquisition board
- **Visual Preset** (Simple Mode interface Only) – Similar to a submaster or cue on a lighting console a visual preset in the Simple Mode is a pre-selected media clip along with specific parameter settings including effects, position and mixing type which can be directly recalled by DMX, MIDI or Keyboard using a single fader, note or button press. There are 64 visual presets per patch and thus 4096 visual presets per media library in Simple Mode interface.



Support, Information and Contact

ArKaos has created a number of support channels for users to ensure you get the most direct and efficient answers to nay questions or support requests you may have.

ArKaos Support Centre :
<http://support.arkaos.net/>

ArKaos Users Forum :
<http://www.arkaos.net/forum>

Solutions

As always, our support team is ready to help you if you should encounter any problem upgrading to the new version.

ArKaos Users Forum

If you just want to discuss with other ArKaos software users, share tips and experiences about our products or third party software / hardware etc.. Our Users Forum is the place to be! (This is not the place to request for help, see below).

Knowledgebase articles

Our online Support Centre features a FAQ / Knowledgebase where a solution to the most common registration / configuration problems has been posted.

Trouble Ticket System

Our online Support Centre also features a Trouble Ticket System which allows our team to receive your support requests and follow up the resolution of your problem as well as eventual future issues.

We strongly recommend that you register for an ArKaos Support Account (free) on our Support Centre in order to be able to check the status of your trouble tickets, post replies to our team or create new trouble tickets directly from our web interface.

Our support team answers your requests during office hours (CET) on week days.

Distributors and resellers

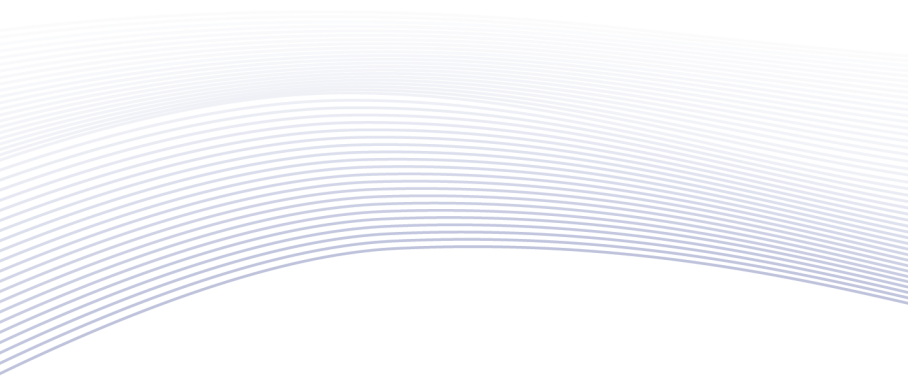
Our distributors and resellers are also at your service if you would like to request information in your language, advice on additional hardware or software, solutions or quotes for a particular configuration etc..

A complete list of distributors and resellers for VJ/DJ or Show/lighting products can be found on our web site at:

<http://www.arkaos.net/distributors.php>

Thank you very much for your interest in our products, we hope you will enjoy using this version as much as we enjoyed creating it!

The ArKaos Team



arKaos
www.arkaos.net